

Mango Prom - Gary Willis - Bass

Scott Henderson

3

Bass

6

11

15

20

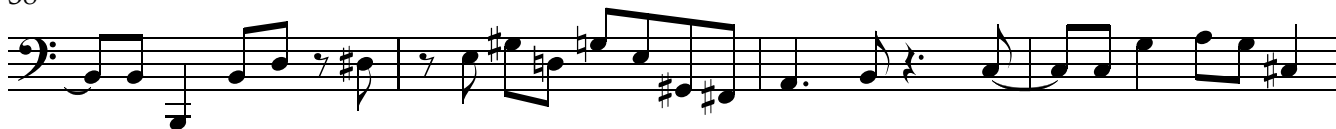
25

30

34

Detailed description: This image shows a bass line for the song 'Mango Prom' by Gary Willis, arranged by Scott Henderson. The music is written in bass clef with a 4/4 time signature. The key signature has one sharp (F#). The score is divided into measures, with measure numbers 3, 6, 11, 15, 20, 25, 30, and 34 indicated at the start of their respective lines. The notation includes eighth notes, quarter notes, and dotted notes, with various accidentals (sharps and naturals) and rests. The piece concludes with a double bar line at the end of measure 34.

38



42



46



51



55



59



64



70



77



206



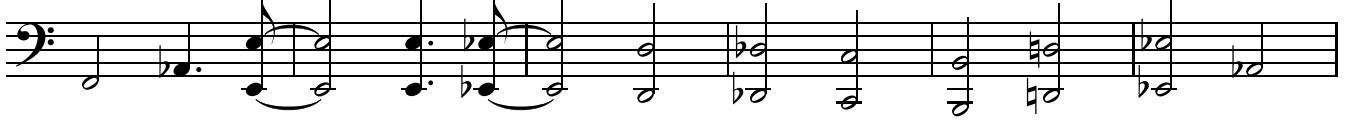
210



215



220



226



231



236



241



246



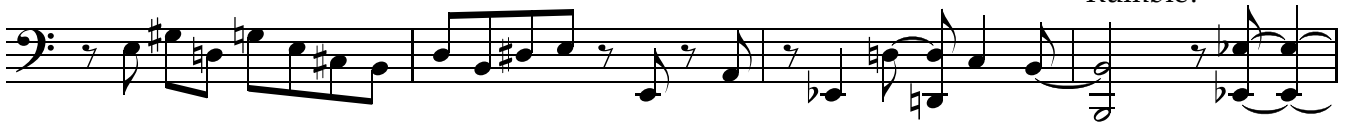
304



308



312



316



320



324



328

