

Outskirts - Gary Willis - Bass

Gary Willis

Bass

8va

Measures 1-4: Bass line in 4/4 time, starting with a treble clef and a key signature of one flat. The melody is characterized by eighth-note patterns and slurs. A dashed line labeled '8va' is positioned above the staff.

5 (8)

Measures 5-8: Continuation of the bass line. Measure 5 features a triplet of eighth notes. Measure 8 includes a double bar line and a key signature change to two flats.

9

Measures 9-11: Continuation of the bass line in the new key signature. Measure 11 ends with a double bar line.

12

Measures 12-14: Continuation of the bass line. Measure 14 ends with a double bar line.

15

Measures 15-17: Continuation of the bass line. Measure 17 ends with a double bar line.

18

Measures 18-20: Continuation of the bass line. Measure 20 ends with a double bar line.

21

Measures 21-23: Continuation of the bass line. Measure 23 ends with a double bar line.

24

Measures 24-26: Continuation of the bass line. Measure 26 ends with a double bar line.

27

Measures 27-29: Continuation of the bass line. Measure 29 ends with a double bar line.

30



33



36



39



42



47



51



54



57



60



63



66



69



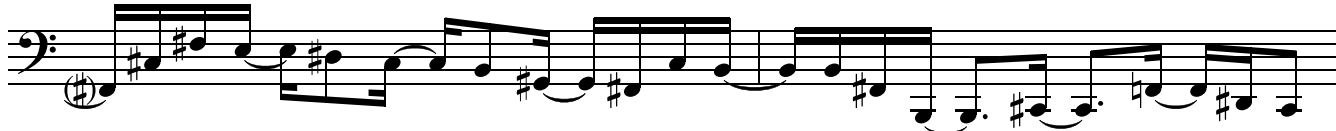
71



73



75



77



79



81



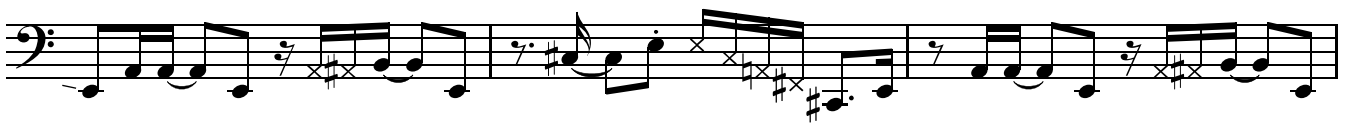
84



87



91



94



97



100



103



106



109



112



114



116



119



122



125



128

