

Salsa Lastra - Gary Willis - Bass

Scott Henderson

Long percussion intro

Bass



The first staff of music begins with a long percussion intro, indicated by a double bar line and a fermata. The notation starts with a whole rest, followed by a quarter rest, and then a series of eighth and sixteenth notes in a rhythmic pattern.

6



The second staff of music starts at measure 6. It continues the rhythmic pattern from the first staff, featuring eighth and sixteenth notes with various accidentals.

9



The third staff of music starts at measure 9. The notation continues with eighth and sixteenth notes, maintaining the complex rhythmic structure.

12



The fourth staff of music starts at measure 12. The pattern of eighth and sixteenth notes continues, with some notes marked with an 'x' to indicate specific techniques.

16



The fifth staff of music starts at measure 16. The notation continues with eighth and sixteenth notes, showing a consistent rhythmic flow.

19



The sixth staff of music starts at measure 19. The notation continues with eighth and sixteenth notes, maintaining the complex rhythmic structure.

22



The seventh staff of music starts at measure 22. The notation continues with eighth and sixteenth notes, showing a consistent rhythmic flow.

25



The eighth staff of music starts at measure 25. The notation continues with eighth and sixteenth notes, maintaining the complex rhythmic structure.

29



The ninth staff of music starts at measure 29. The notation continues with eighth and sixteenth notes, showing a consistent rhythmic flow.

33



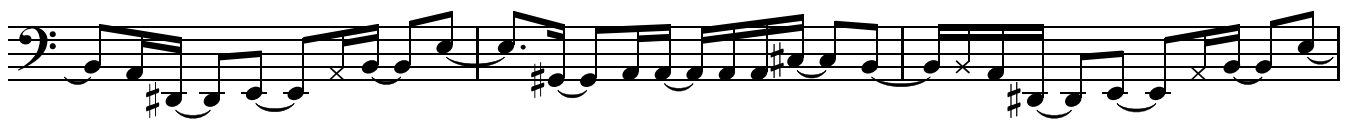
36



39



42



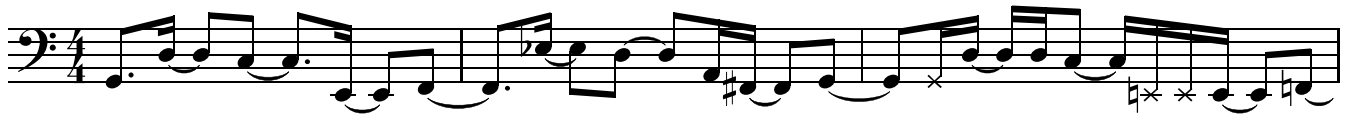
45



49



54



57



60



64



68



71



75



78



81



84



87



90



93



97



101



107



114



118



121



124



127



