

Santa Clara Con Montuno - Richard Bona - Bass

Richard Bona

Bass

4

7

10

13 1. 2. 3

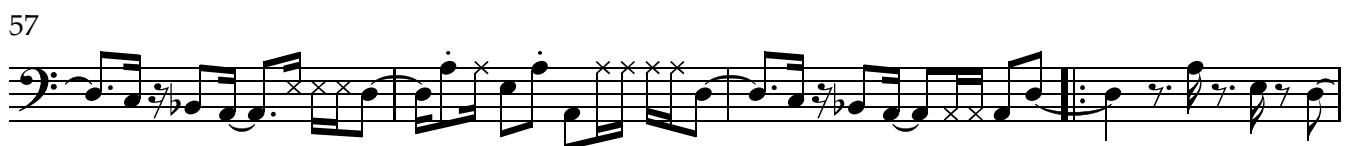
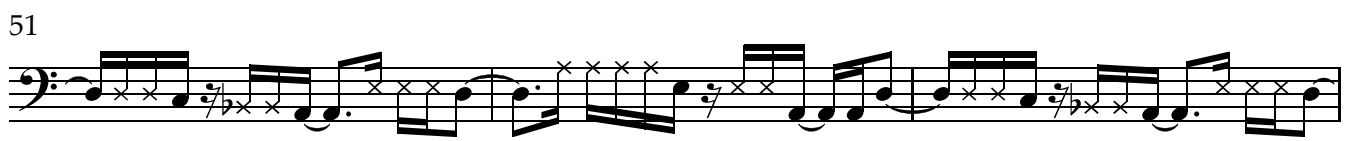
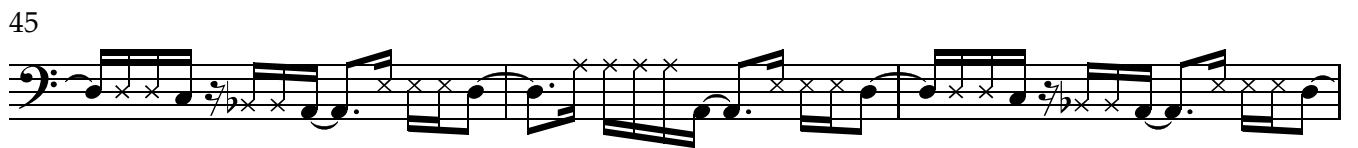
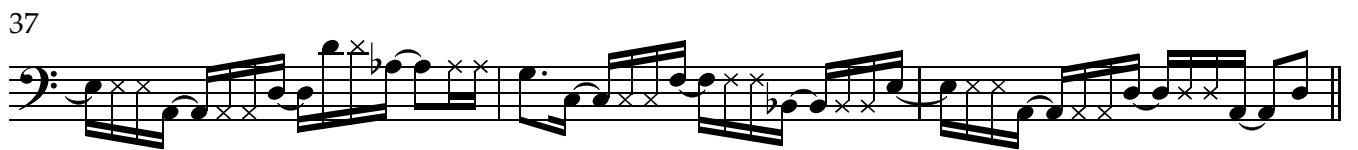
16 3 3

20 3 3

24 1.

27 2. 3

Detailed description: This is a bass line for the piece 'Santa Clara Con Montuno' by Richard Bona. The music is written in 4/4 time and features a variety of rhythmic patterns, including eighth and sixteenth notes, and rests. The score is divided into measures, with measure numbers 4, 7, 10, 13, 16, 20, 24, and 27 indicated. There are first and second endings at measures 13 and 24. A piano (p) dynamic marking is present at measure 4. A triplet of eighth notes is marked with a '3' at measure 13. Another triplet of eighth notes is marked with a '3' at measure 16. A final triplet of eighth notes is marked with a '3' at measure 27. The key signature has one flat (Bb).



61

last time