

Tuesday's Gone - Leon Wilkeson - Bass

Allen Collins

Bass

8^{va}

1

Detailed description: This block contains the first seven measures of the bass line. It starts with a treble clef, a key signature of two sharps (F# and C#), and a 6/8 time signature. The melody begins with a dotted quarter note followed by an eighth note, then continues with a series of eighth and quarter notes. A dashed line above the staff indicates an octave transposition (8^{va}). The first measure ends with a first ending bracket.

8

3

Detailed description: This block contains measures 8 through 13. It features a mix of eighth and quarter notes, with several triplet markings (indicated by a '3' over the notes) and a fermata over a measure. The key signature and time signature remain consistent.

14

3

Detailed description: This block contains measures 14 through 20. The bass line continues with eighth and quarter notes, including triplet markings and a fermata. The notation is consistent with the previous sections.

21

3

Detailed description: This block contains measures 21 through 26. It features eighth and quarter notes with triplet markings and a fermata. The key signature and time signature are maintained.

27

3

Detailed description: This block contains measures 27 through 32. The bass line continues with eighth and quarter notes, including triplet markings and a fermata. The notation is consistent with the previous sections.

33 Chorus

3

Detailed description: This block contains measures 33 through 38, which form the chorus. It features eighth and quarter notes with triplet markings. The key signature and time signature are consistent.

39 Guitar theme

3

Detailed description: This block contains measures 39 through 44, labeled as the 'Guitar theme'. It features eighth and quarter notes with triplet markings and a fermata. The key signature and time signature are consistent.

45 Verse

3

Detailed description: This block contains measures 45 through 50, labeled as the 'Verse'. It features eighth and quarter notes with triplet markings and a fermata. The key signature and time signature are consistent.

51



57

Verse



64

Chorus



69



75



80

Piano solo



86



Strange slide?

92



98



103



108



114



120



127



133



138



143



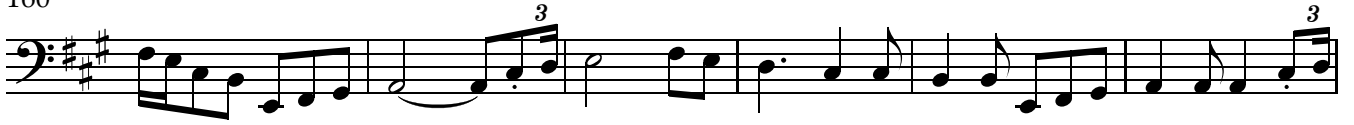
148



154



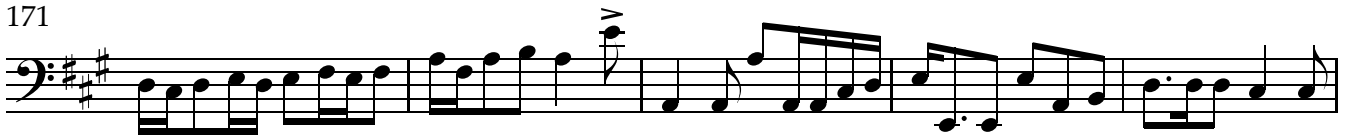
160



166



171



176



181

