

# The Fountain Of Lamneth - Geddy Lee - Bass

Lee/Lifeson/Peart

## 1. Into the Valley

8 Verse 1 & 2 (16)

4-string Bass Guitar

8

13

19

23

26

29

32

Bass

35

Bass

38

Bass

42

Bass

46

Bass

51

Bass

53

Bass

drum solo

## 2. Didacts and Narpets

55 drum part

Bass

63

Bass

A single musical staff in bass clef showing measure 63. It contains a few notes: a quarter note G2, an eighth note F2, a quarter note E2, and a quarter note D2.

68

10 bars drums

Listen

Bass

A single musical staff in bass clef showing measure 68. It contains a few notes: a quarter note G2, an eighth note F2, a quarter note E2, and a quarter note D2. The staff ends with a double bar line and a common time signature 'C'.

3. No-One At The Bridge

73

Bass

A single musical staff in bass clef showing measure 73. It contains a few notes: a quarter note G2, an eighth note F2, a quarter note E2, and a quarter note D2. The staff ends with a double bar line and a common time signature 'C'.

Riding back to consciousness

79

Bass

A single musical staff in bass clef showing measure 79. It contains a few notes: a quarter note G2, an eighth note F2, a quarter note E2, and a quarter note D2. The staff ends with a double bar line and a common time signature 'C'.

85

Bass

A single musical staff in bass clef showing measure 85. It contains a few notes: a quarter note G2, an eighth note F2, a quarter note E2, and a quarter note D2. The staff ends with a double bar line and a common time signature 'C'.

91

Bass

A single musical staff in bass clef showing measure 91. It contains a few notes: a quarter note G2, an eighth note F2, a quarter note E2, and a quarter note D2. The staff ends with a double bar line and a common time signature 'C'.

94

Bass

A single musical staff in bass clef showing measure 94. It contains a few notes: a quarter note G2, an eighth note F2, a quarter note E2, and a quarter note D2. The staff ends with a double bar line and a common time signature 'C'.

97

Bass

A single musical staff in bass clef showing measure 97. It contains a few notes: a quarter note G2, an eighth note F2, a quarter note E2, and a quarter note D2. The staff ends with a double bar line and a common time signature 'C'.

101  
Bass

101

107  
Bass Remembering

107 Remembering

113  
Bass

113

118  
Bass

118

121  
Bass

121

124  
Bass

124

128  
Bass Call out

128 Call out

133  
Bass Call out

133 Call out

137  
Bass Cry out

137 Cry out

141

Bass

146

Bass

152

Bass

157

Bass

162

Bass

165

Bass

168

Bass

170

Bass

#### 4. Panacea

174

6

Bass

175 17

Bass

180

Bass

185 4

Bass

191

Bass

197

Bass

203

Bass

208

Bass

213

Bass

218



## 5. Bacchus Plateau

224 4



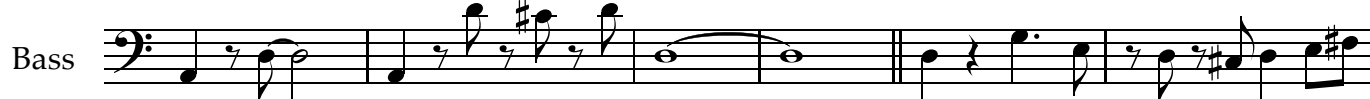
229



234



239



245



250



255



260

Bass



265

Bass




270

Bass



276

Bass



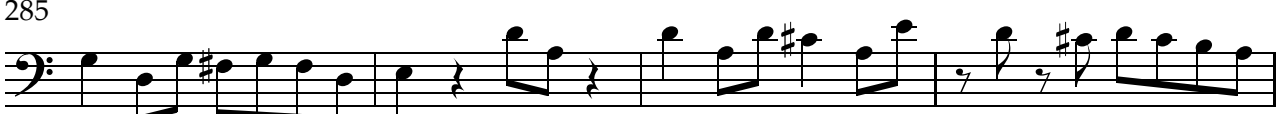
280

Bass



285

Bass



289

Bass



293

Bass



298

Bass





303

Bass



308

Bass



Fade

6. The Fountain

313

Bass



316

Bass



3

319

Bass



322

Bass



325

Bass



328

Bass



331

Bass

A single musical staff in bass clef for measure 331. It contains a sequence of eighth and quarter notes with various accidentals, including sharps and naturals.

334

Bass

A single musical staff in bass clef for measure 334. It features a complex rhythmic pattern with many sixteenth notes and some eighth notes, including a triplet of sixteenth notes.

337

Bass

A single musical staff in bass clef for measure 337. It contains a sequence of eighth and quarter notes with various accidentals, including sharps and naturals.

341

Bass

A single musical staff in bass clef for measure 341. It contains a sequence of quarter and eighth notes, followed by a whole note and a half note.

346

Bass

A single musical staff in bass clef for measure 346. It features a complex rhythmic pattern with many sixteenth notes and some eighth notes, including a triplet of sixteenth notes.

349

Bass

A single musical staff in bass clef for measure 349. It features a complex rhythmic pattern with many sixteenth notes and some eighth notes, including a triplet of sixteenth notes.

352

Bass

A single musical staff in bass clef for measure 352. It features a complex rhythmic pattern with many sixteenth notes and some eighth notes, including a triplet of sixteenth notes.

355

Bass

A single musical staff in bass clef for measure 355. It features a complex rhythmic pattern with many sixteenth notes and some eighth notes, including a triplet of sixteenth notes.

358

Bass

A single musical staff in bass clef for measure 358. It features a complex rhythmic pattern with many sixteenth notes and some eighth notes, including a triplet of sixteenth notes.

361  
Bass

364  
Bass

367  
Bass

371  
Bass

377  
Bass

379  
Bass

381  
Bass