

Sister Cheryl - Ron Carter - Bass

Tony Williams

Upright Bass



Measures 1-5 of the Upright Bass part. The notation is in bass clef with a key signature of one sharp (F#). The rhythm consists of quarter notes and eighth notes.

6

U. Bass



Measures 6-10 of the U. Bass part. Measure 6 starts with a double bar line. The notation continues with quarter and eighth notes.

11

U. Bass



Measures 11-15 of the U. Bass part. The notation continues with quarter and eighth notes.

16

U. Bass



Measures 16-20 of the U. Bass part. The notation continues with quarter and eighth notes.

21


U. Bass



Measures 21-25 of the U. Bass part. The notation continues with quarter and eighth notes.

26

U. Bass



Measures 26-30 of the U. Bass part. Measure 26 starts with a double bar line. The notation continues with quarter and eighth notes.

31

U. Bass



Measures 31-35 of the U. Bass part. The notation continues with quarter and eighth notes.

36

U. Bass



Measures 36-40 of the U. Bass part. The notation continues with quarter and eighth notes.

41

U. Bass



46

U. Bass



51

U. Bass



56

U. Bass



61

U. Bass



66

U. Bass



72

U. Bass



77

U. Bass



82

U. Bass



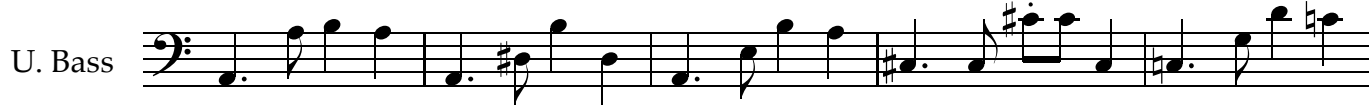
87



92



97



102



107



112



117



122



127



132
U. Bass



137
U. Bass



142
U. Bass



147
U. Bass



152
U. Bass



157
U. Bass



162
U. Bass



167
U. Bass



172
U. Bass



