

Beautifully Broken - Stefan Lessard - Bass

Waaren Haynes/Danny Louis

4-string Bass Guitar



7



14



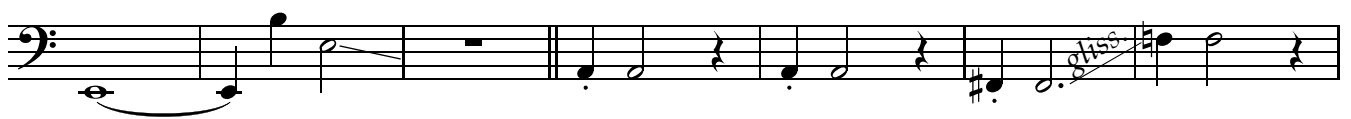
21



28



36



43



50



57



64



71



78



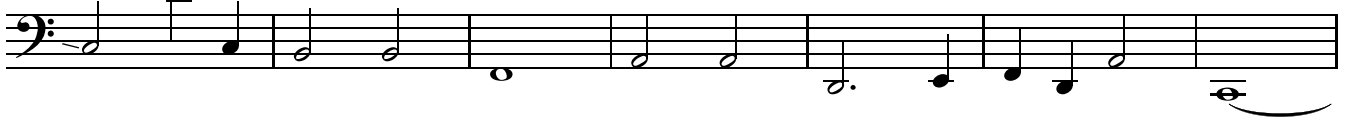
85



92



99



106



113



120

Musical notation for measure 120, bass clef. The staff contains a sequence of notes: G2, A2, B2, C3, D3, E3, F3, G3, A3, B3, C4, D4, E4, F4, G4, A4, B4, C5. There are rests in measures 121, 122, and 123. Measure 124 features a glissando (gliss.) leading to a sharp sign (#) above the staff. Measure 125 contains notes G4, A4, B4, C5.

126

Musical notation for measure 126, bass clef. The staff contains notes G2, A2, B2, C3, D3, E3, F3, G3, A3, B3, C4, D4, E4, F4, G4, A4, B4, C5. There are rests in measures 127, 128, and 129. Measure 130 features a glissando (gliss.) leading to a sharp sign (#) above the staff. Measure 131 contains notes G4, A4, B4, C5.

132

Musical notation for measure 132, bass clef. The staff contains notes G2, A2, B2, C3, D3, E3, F3, G3, A3, B3, C4, D4, E4, F4, G4, A4, B4, C5. There are rests in measures 133, 134, and 135. Measure 136 features a glissando (gliss.) leading to a sharp sign (#) above the staff. Measure 137 contains notes G4, A4, B4, C5.

139

Musical notation for measure 139, bass clef. The staff contains notes G2, A2, B2, C3, D3, E3, F3, G3, A3, B3, C4, D4, E4, F4, G4, A4, B4, C5. There are rests in measures 140, 141, and 142. Measure 143 features a glissando (gliss.) leading to a sharp sign (#) above the staff. Measure 144 contains notes G4, A4, B4, C5.

146

Musical notation for measure 146, bass clef. The staff contains notes G2, A2, B2, C3, D3, E3, F3, G3, A3, B3, C4, D4, E4, F4, G4, A4, B4, C5. There are rests in measures 147, 148, and 149. Measure 150 features a glissando (gliss.) leading to a sharp sign (#) above the staff. Measure 151 contains notes G4, A4, B4, C5.

152

Musical notation for measure 152, bass clef. The staff contains notes G2, A2, B2, C3, D3, E3, F3, G3, A3, B3, C4, D4, E4, F4, G4, A4, B4, C5. There are rests in measures 153, 154, and 155. Measure 156 features a glissando (gliss.) leading to a sharp sign (#) above the staff. Measure 157 contains notes G4, A4, B4, C5.

159

Musical notation for measure 159, bass clef. The staff contains notes G2, A2, B2, C3, D3, E3, F3, G3, A3, B3, C4, D4, E4, F4, G4, A4, B4, C5. There are rests in measures 160, 161, and 162. Measure 163 features a glissando (gliss.) leading to a sharp sign (#) above the staff. Measure 164 contains notes G4, A4, B4, C5.

165

Musical notation for measure 165, bass clef. The staff contains notes G2, A2, B2, C3, D3, E3, F3, G3, A3, B3, C4, D4, E4, F4, G4, A4, B4, C5. There are rests in measures 166, 167, and 168. Measure 169 features a glissando (gliss.) leading to a sharp sign (#) above the staff. Measure 170 contains notes G4, A4, B4, C5.

170

Repeat with variation to fade

Musical notation for measure 170, bass clef. The staff contains notes G2, A2, B2, C3, D3, E3, F3, G3, A3, B3, C4, D4, E4, F4, G4, A4, B4, C5. There are rests in measures 171, 172, and 173. Measure 174 features a glissando (gliss.) leading to a sharp sign (#) above the staff. Measure 175 contains notes G4, A4, B4, C5.