

Rockland Wonderland - Matthew Gerrard - Bass

4-string Bass Guitar



Musical notation for 4-string Bass Guitar, measures 1-4. The notation is in bass clef with a key signature of one flat (B-flat). It begins with a whole rest in the first measure, followed by eighth and quarter notes in the subsequent measures.

5


Bass



Musical notation for Bass, measures 5-8. Measure 5 starts with a double bar line and a repeat sign. The notation continues with eighth and quarter notes.

9

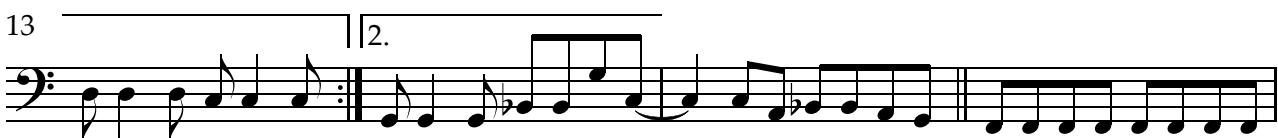
Bass



Musical notation for Bass, measures 9-12. A first ending bracket labeled '1.' spans measures 9 through 12.

13

Bass



Musical notation for Bass, measures 13-16. A second ending bracket labeled '2.' spans measures 13 through 16. The notation includes eighth notes and a sixteenth-note triplet.

17

Bass



Musical notation for Bass, measures 17-20. The notation features a sequence of eighth notes and quarter notes, including a triplet of eighth notes in measure 18.

21

Bass



Musical notation for Bass, measures 21-25. Measures 21 and 22 consist of eighth-note patterns. Measure 23 contains a whole rest, and measures 24 and 25 continue with eighth and quarter notes.

26

Bass



Musical notation for Bass, measures 26-29. The notation continues with eighth and quarter notes.

30

Bass



Musical notation for Bass, measures 30-33. The notation continues with eighth and quarter notes, ending with a double bar line.

34



38



42



46



51



55



59



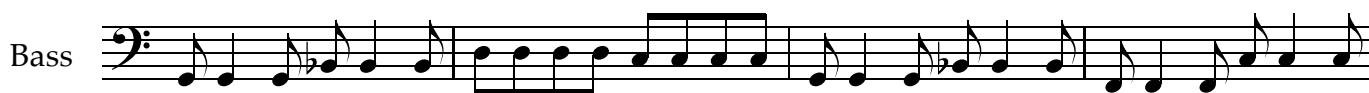
63



68



74



78



82



87

7



92



96



100



104



108

Fade

