

Piano Sonata No. 8, Pathetique

- Anthony Jackson - Bass

Beethoven (via Hiromi)

8

6-string Electric Bass

Musical notation for measures 8-9 of the bass line. Measure 8 starts with a whole rest. Measure 9 contains a half note G2, a half note F2, and a whole note E2.

6

Musical notation for measures 10-11 of the bass line. Measure 10 contains a half note G2, a half note F2, and a whole note E2. Measure 11 contains a half note D2, a half note C2, and a whole note B1, with a fermata over the B1.

13

Musical notation for measures 12-13 of the bass line. Measure 12 contains a half note G2, a half note F2, and a whole note E2. Measure 13 contains a half note D2, a half note C2, and a whole note B1, with a fermata over the B1.

19

Musical notation for measures 14-18 of the bass line. Measure 14: G2, F2, E2. Measure 15: D2, C2, B1. Measure 16: A1, G1, F1. Measure 17: E1, D1, C1. Measure 18: B0, A0, G0.

25

Musical notation for measures 19-24 of the bass line. Measure 19: G2, F2, E2. Measure 20: D2, C2, B1. Measure 21: A1, G1, F1. Measure 22: E1, D1, C1. Measure 23: B0, A0, G0. Measure 24: F0, E0, D0.

31

Musical notation for measures 25-30 of the bass line. Measure 25: G2, F2, E2. Measure 26: D2, C2, B1. Measure 27: A1, G1, F1. Measure 28: E1, D1, C1. Measure 29: B0, A0, G0. Measure 30: F0, E0, D0.

37

Musical notation for measures 31-36 of the bass line. Measure 31: G2, F2, E2. Measure 32: D2, C2, B1. Measure 33: A1, G1, F1. Measure 34: E1, D1, C1. Measure 35: B0, A0, G0. Measure 36: F0, E0, D0.

42

Musical notation for measures 37-41 of the bass line. Measure 37: G2, F2, E2. Measure 38: D2, C2, B1. Measure 39: A1, G1, F1. Measure 40: E1, D1, C1. Measure 41: B0, A0, G0.

48



54

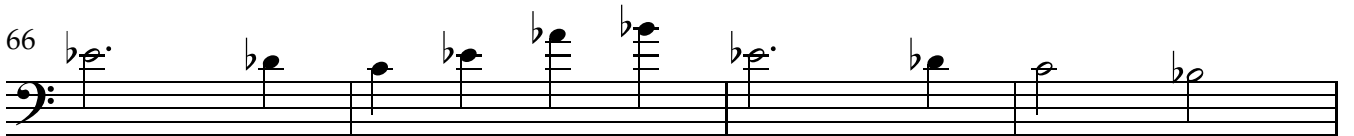


w. volume pedal

60



66



70

