



37

Bass

42

Bass

47

Bass

52

Bass

57

Bass

62

Bass

68

Bass

73

Bass

78

Bass

82



86



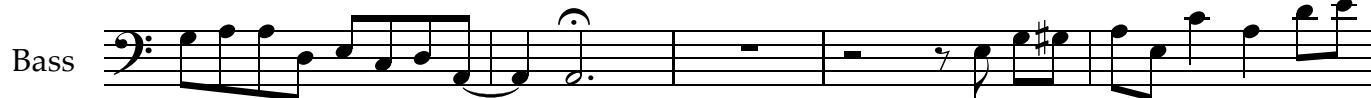
90



95



100



105



111



116



121



125

Bass

Fade

The image shows a single staff of music in bass clef, labeled 'Bass' on the left. The staff contains measures 125 through 130. Measure 125 starts with a quarter note G2, followed by a quarter note F2, and then a quarter note E2. Measure 126 contains a quarter note D2, a quarter note C2, a quarter note B1, and a quarter note A1. Measure 127 contains a quarter note G1, a quarter note F1, a quarter note E1, and a quarter note D1. Measure 128 contains a quarter note C1, a quarter note B0, a quarter note A0, and a quarter note G0. Measure 129 contains a quarter note F0, a quarter note E0, a quarter note D0, and a quarter note C0. Measure 130 contains a quarter note B0, a quarter note A0, a quarter note G0, and a quarter note F0. The piece ends with a double bar line. The word 'Fade' is written above the staff at the end of measure 130. There are also some markings above the staff, including a '7' and some symbols that look like '>' or 'v'.