

Don't Call Me Baby - Madison Avenue

Bass Guitar



4



7



10



13



16



19



22



25



28



31



34 Baby

Measures 34-36: Bass clef, key signature of two flats (Bb, Eb). Measure 34: G2, A2, Bb2, C3, D3, Eb3, E3, F3. Measure 35: G2, A2, Bb2, C3, D3, Eb3, E3, F3. Measure 36: G2, A2, Bb2, C3, D3, Eb3, E3, F3.

37

Measures 37-39: Bass clef, key signature of two flats. Measure 37: G2, A2, Bb2, C3, D3, Eb3, E3, F3. Measure 38: G2, A2, Bb2, C3, D3, Eb3, E3, F3. Measure 39: G2, A2, Bb2, C3, D3, Eb3, E3, F3.

40

Measures 40-42: Bass clef, key signature of two flats. Measure 40: G2, A2, Bb2, C3, D3, Eb3, E3, F3. Measure 41: G2, A2, Bb2, C3, D3, Eb3, E3, F3. Measure 42: G2, A2, Bb2, C3, D3, Eb3, E3, F3.

43

Measures 43-45: Bass clef, key signature of two flats. Measure 43: G2, A2, Bb2, C3, D3, Eb3, E3, F3. Measure 44: G2, A2, Bb2, C3, D3, Eb3, E3, F3. Measure 45: G2, A2, Bb2, C3, D3, Eb3, E3, F3.

46 Behind my smile

Measures 46-48: Bass clef, key signature of two flats. Measure 46: G2, A2, Bb2, C3, D3, Eb3, E3, F3. Measure 47: G2, A2, Bb2, C3, D3, Eb3, E3, F3. Measure 48: G2, A2, Bb2, C3, D3, Eb3, E3, F3.

49

Measures 49-51: Bass clef, key signature of two flats. Measure 49: G2, A2, Bb2, C3, D3, Eb3, E3, F3. Measure 50: G2, A2, Bb2, C3, D3, Eb3, E3, F3. Measure 51: G2, A2, Bb2, C3, D3, Eb3, E3, F3.

52

Measures 52-54: Bass clef, key signature of two flats. Measure 52: G2, A2, Bb2, C3, D3, Eb3, E3, F3. Measure 53: G2, A2, Bb2, C3, D3, Eb3, E3, F3. Measure 54: G2, A2, Bb2, C3, D3, Eb3, E3, F3.

55

Measures 55-57: Bass clef, key signature of two flats. Measure 55: G2, A2, Bb2, C3, D3, Eb3, E3, F3. Measure 56: G2, A2, Bb2, C3, D3, Eb3, E3, F3. Measure 57: G2, A2, Bb2, C3, D3, Eb3, E3, F3.

58

Measures 58-60: Bass clef, key signature of two flats. Measure 58: G2, A2, Bb2, C3, D3, Eb3, E3, F3. Measure 59: G2, A2, Bb2, C3, D3, Eb3, E3, F3. Measure 60: G2, A2, Bb2, C3, D3, Eb3, E3, F3.

61

Measures 61-63: Bass clef, key signature of two flats. Measure 61: G2, A2, Bb2, C3, D3, Eb3, E3, F3. Measure 62: G2, A2, Bb2, C3, D3, Eb3, E3, F3. Measure 63: G2, A2, Bb2, C3, D3, Eb3, E3, F3.

64

Measures 64-66: Bass clef, key signature of two flats. Measure 64: G2, A2, Bb2, C3, D3, Eb3, E3, F3. Measure 65: G2, A2, Bb2, C3, D3, Eb3, E3, F3. Measure 66: G2, A2, Bb2, C3, D3, Eb3, E3, F3.

67



70



73



76



79



82



85



88



92



95



98



101



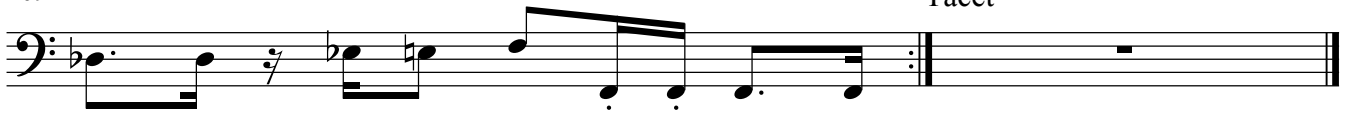
104



107



109



Tacet