

Cygnus XI Book II - Geddy Lee Bass

1. Prelude

Lee/Lifeson/Peart

Bass Guitar



Musical notation for the first staff, starting with a double bar line and a key signature of one sharp (F#).

7



Musical notation for the second staff, including a time signature change to 12/8.

11



Musical notation for the third staff.

13



Musical notation for the fourth staff.

15




Musical notation for the fifth staff, including a time signature change to 9/8.

18



Musical notation for the sixth staff, including a time signature change to 12/8.

21



Musical notation for the seventh staff.

24



Musical notation for the eighth staff.

27



Musical notation for the ninth staff.

30



Musical notation for the tenth staff, including a time signature change to 6/8.

34



38



42



46



50



53



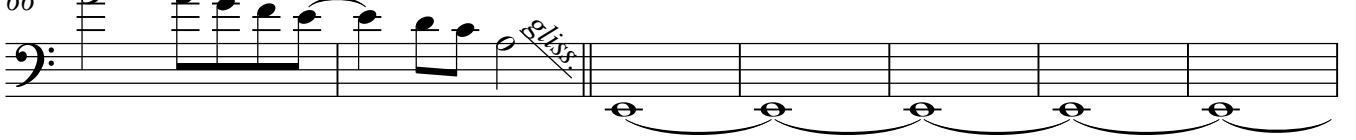
57



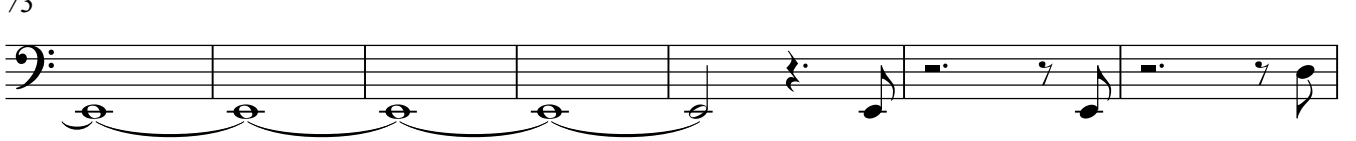
62



66



73



80



121



125



129



132



135



137



2. Apollo: Bringer Of Wisdom

141



146



151



156



160



164



169



174



180



184



188



191

Musical notation for measures 191-194 in bass clef. Measure 191 starts with a quarter rest followed by eighth notes. Measure 192 has a quarter rest followed by eighth notes. Measure 193 has a quarter rest followed by eighth notes. Measure 194 has a quarter rest followed by eighth notes and ends with a triplet of eighth notes.

195

Musical notation for measures 195-198 in bass clef. Measure 195 starts with a quarter rest followed by eighth notes. Measure 196 has a quarter rest followed by eighth notes. Measure 197 has a quarter rest followed by eighth notes. Measure 198 has a quarter rest followed by eighth notes.

199

Musical notation for measures 199-202 in bass clef. Measure 199 starts with a quarter rest followed by eighth notes. Measure 200 has a quarter rest followed by eighth notes. Measure 201 has a quarter rest followed by eighth notes. Measure 202 has a quarter rest followed by eighth notes.

203

Musical notation for measures 203-206 in bass clef. Measure 203 starts with a quarter rest followed by eighth notes. Measure 204 has a quarter rest followed by eighth notes. Measure 205 has a quarter rest followed by eighth notes. Measure 206 has a quarter rest followed by eighth notes.

207

Musical notation for measures 207-210 in bass clef. Measure 207 starts with a quarter rest followed by eighth notes. Measure 208 has a quarter rest followed by eighth notes. Measure 209 has a quarter rest followed by eighth notes. Measure 210 has a quarter rest followed by eighth notes and ends with a triplet of eighth notes.

210

Musical notation for measures 210-213 in bass clef. Measure 210 starts with a quarter rest followed by eighth notes. Measure 211 has a quarter rest followed by eighth notes. Measure 212 has a quarter rest followed by eighth notes. Measure 213 has a quarter rest followed by eighth notes and ends with a triplet of eighth notes.

213

Musical notation for measures 213-216 in bass clef. Measure 213 starts with a quarter rest followed by eighth notes. Measure 214 has a quarter rest followed by eighth notes. Measure 215 has a quarter rest followed by eighth notes. Measure 216 has a quarter rest followed by eighth notes.

216

Musical notation for measures 216-219 in bass clef. Measure 216 starts with a quarter rest followed by eighth notes. Measure 217 has a quarter rest followed by eighth notes. Measure 218 has a quarter rest followed by eighth notes. Measure 219 has a quarter rest followed by eighth notes.

219

Musical notation for measures 219-222 in bass clef. Measure 219 starts with a quarter rest followed by eighth notes. Measure 220 has a quarter rest followed by eighth notes. Measure 221 has a quarter rest followed by eighth notes. Measure 222 has a quarter rest followed by eighth notes.

222

Musical notation for measures 222-225 in bass clef. Measure 222 starts with a quarter rest followed by eighth notes. Measure 223 has a quarter rest followed by eighth notes. Measure 224 has a quarter rest followed by eighth notes. Measure 225 has a quarter rest followed by eighth notes.

3. Dionysus: Bringer Of Love

225



231



236



240



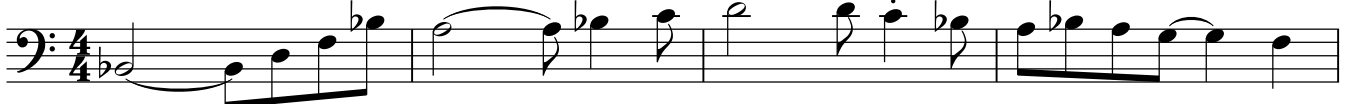
244



248



252



256



261



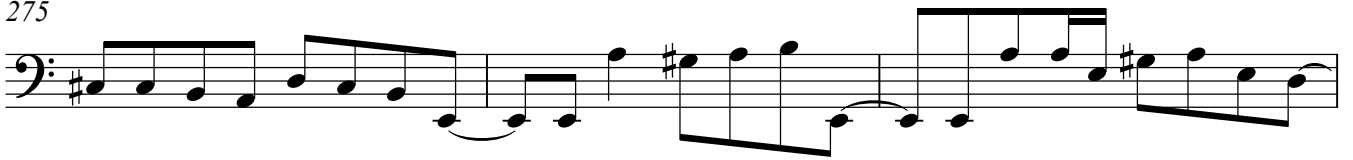
267



271



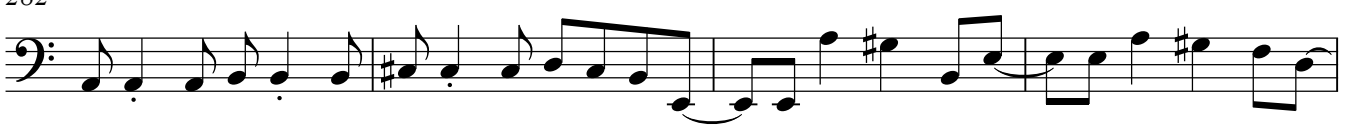
275



278



282



286



290



294



297



4. Armageddon: The Battle Of Heart And Mind

300



303



306



309



312



315



318



322



325



328



332



335



338



341



345



348



351



354



356



358



360



362



364



366



368



370



372



374



376



379

Rall.....



5. Cygnus: Bringer Of Balance

383 Spacey Interlude (bass tacet)

Then all at once the choas ceased

389

394

397

401

405

409

413

417

Faster tempo

421

427

6. The Sphere - A Kind Of Dream

455 Bass tacet throughout

