

Riding The Wave - Panoply Bass

Drone 6

Bass

9

14

18

22

26

30

34

38

42

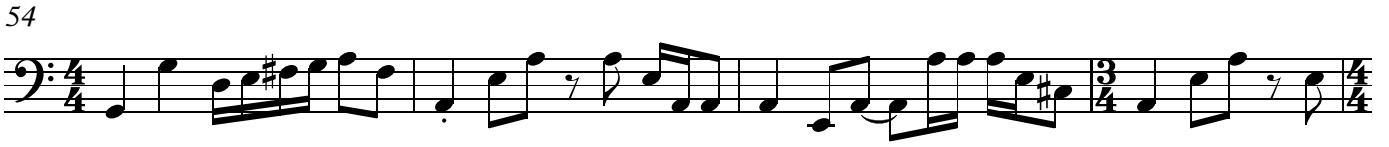
46

Detailed description: This is a bass line for a piece titled 'Riding The Wave - Panoply Bass'. The score is written in bass clef and 4/4 time. It begins with a 'Drone' section consisting of six measures of whole notes: G2, F2, E2, D2, C2, and B1. The main piece starts at measure 9 and features a complex rhythmic pattern with frequent eighth and sixteenth notes, often beamed together. The key signature changes from one flat (Bb) to one sharp (F#) at measure 14. The piece includes several triplet markings and dynamic markings such as accents and slurs. The score is divided into systems, with measure numbers 9, 14, 18, 22, 26, 30, 34, 38, 42, and 46 indicating the start of each system. The final measure shown is 46.

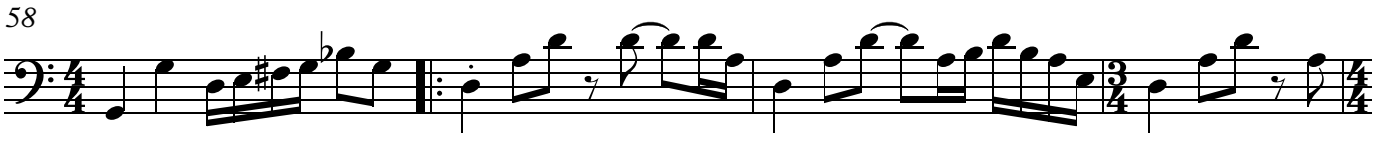
50



54



58



62



66



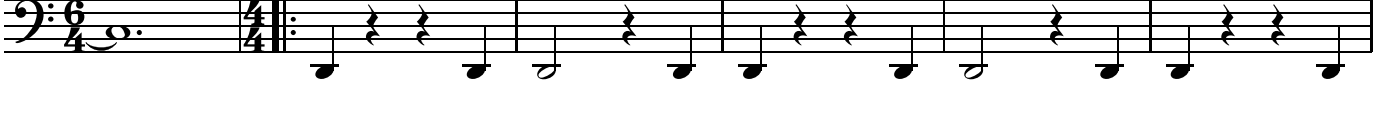
73

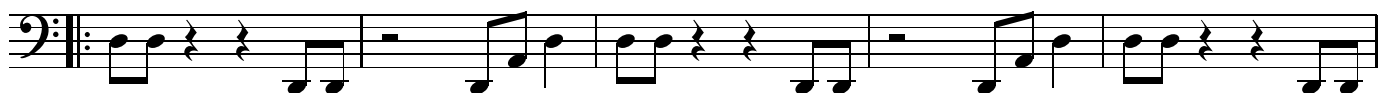
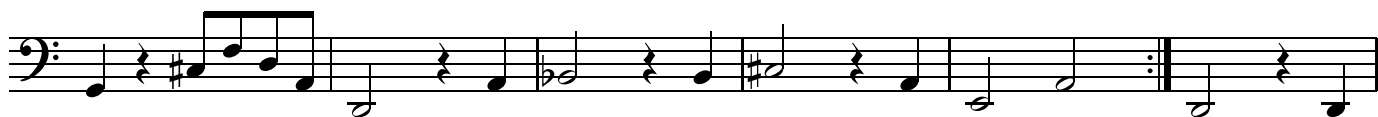


81

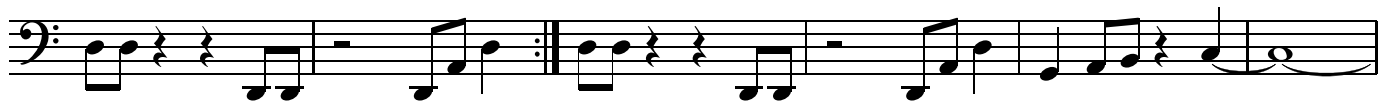


87





x3



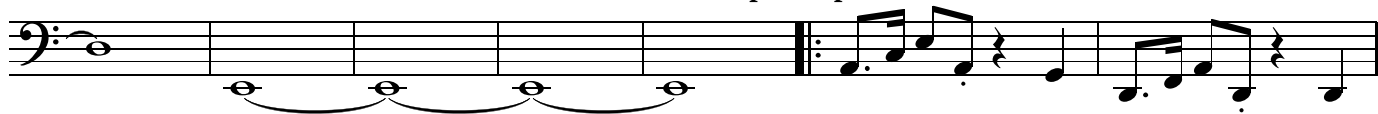
Tempo slows



12



Drum pick up



The image displays five staves of musical notation in bass clef. The first staff begins with a whole rest, followed by a repeat sign and a sequence of eighth and quarter notes. The second staff continues with eighth and quarter notes, including a key signature change to one sharp (F#). The third staff features a repeat sign and eighth/quarter notes. The fourth staff continues with eighth and quarter notes. The fifth staff concludes with eighth notes, a repeat sign, and a final phrase of half notes with a fermata over the last note.