

Age Of Information - Jeff Berlin Bass

Bass Guitar 

4

Bass 

6

Bass 

9

Bass 

11

Bass 

14

Bass 

17

Bass 

20

Bass 

23

Bass 

27

Bass 

31

Bass 

35



39



43



47



51



55



59



63



67



71



73



76



79



82



85



88



92



96



100



104



108



112



116

Bass

Musical notation for Bass line starting at measure 116. The staff is in bass clef. Measure 116: 3/4 time signature, notes G#2, A2, B2. Measure 117: 4/4 time signature, notes G#2, A2, B2, C3. Measure 118: 4/4 time signature, notes G#2, A2, B2, C3. Measure 119: 3/4 time signature, notes G#2, A2, B2. Measure 120: 4/4 time signature, notes G#2, A2, B2, C3.

120

Fade on riff

Bass

Musical notation for Bass line starting at measure 120. The staff is in bass clef. Measure 120: 3/4 time signature, notes G#2, A2, B2. Measure 121: 4/4 time signature, notes G#2, A2, B2, C3. Measure 122: 4/4 time signature, notes G#2, A2, B2, C3. Measure 123: 3/4 time signature, notes G#2, A2, B2. Measure 124: 4/4 time signature, notes G#2, A2, B2, C3. The line ends with a double bar line.

Gothic 17 - Jeff Berlin Bass

x2

Bass Guitar 

7 

11 

15 

19 

22 

25 

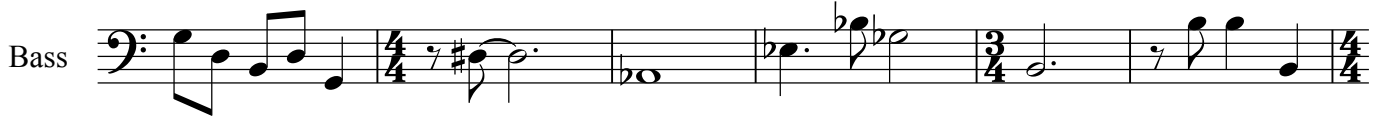
28 

32 

37 

42 

47



53



58



64



70



75



78



82



86



90



94



153

Bass

Musical staff for measure 153, Bass clef. The staff contains four measures of music with various time signatures: 3/4, 4/4, 3/4, and 4/4. The notes include quarter notes, eighth notes, and rests, with some accidentals (sharps and naturals).

157

Bass

Musical staff for measure 157, Bass clef. The staff contains four measures of music with time signatures 4/4, 3/4, 4/4, and 4/4. The notes include quarter notes, eighth notes, and rests, with various accidentals.

161

Bass

Musical staff for measure 161, Bass clef. The staff contains four measures of music with time signatures 4/4, 3/4, 4/4, and 3/4. The notes include quarter notes, eighth notes, and rests, with various accidentals.

165

Bass

Musical staff for measure 165, Bass clef. The staff contains four measures of music with time signatures 3/4, 4/4, 3/4, and 4/4. The notes include quarter notes, eighth notes, and rests, with various accidentals.

169

Bass

Musical staff for measure 169, Bass clef. The staff contains four measures of music with time signatures 4/4, 4/4, 3/4, and 4/4. The notes include quarter notes, eighth notes, and rests, with various accidentals.

173

Bass

Musical staff for measure 173, Bass clef. The staff contains four measures of music with time signatures 4/4, 3/4, 4/4, and 4/4. The notes include quarter notes, eighth notes, and rests, with various accidentals.

176

Bass

Musical staff for measure 176, Bass clef. The staff contains four measures of music with time signatures 4/4, 3/4, 4/4, and 3/4. The notes include quarter notes, eighth notes, and rests, with various accidentals.

180

Bass

Musical staff for measure 180, Bass clef. The staff contains four measures of music with time signatures 3/4, 4/4, 3/4, and 4/4. The notes include quarter notes, eighth notes, and rests, with various accidentals.

184

Bass

Musical staff for measure 184, Bass clef. The staff contains four measures of music with time signatures 4/4, 4/4, 3/4, and 4/4. The notes include quarter notes, eighth notes, and rests, with various accidentals. A fermata is placed over the first measure.

188

Bass

Musical staff for measure 188, Bass clef. The staff contains four measures of music with time signatures 4/4, 3/4, 4/4, and 4/4. The notes include quarter notes, eighth notes, and rests, with various accidentals.

191

Bass

Musical staff for measure 191, Bass clef. The staff contains four measures of music with time signatures 4/4, 3/4, 4/4, and 4/4. The notes include quarter notes, eighth notes, and rests, with various accidentals.

194

Bass

Measure 194: Bass clef, 4/4 time signature, key signature of one sharp (F#). The staff contains a sequence of eighth and quarter notes: F#2, G2, A2, B2, C3, D3, E3, F#3, G3, A3, B3, C4, D4, E4, F#4, G4, A4, B4, C5, D5, E5, F#5, G5, A5, B5, C6, D6, E6, F#6, G6, A6, B6, C7, D7, E7, F#7, G7, A7, B7, C8, D8, E8, F#8, G8, A8, B8, C9, D9, E9, F#9, G9, A9, B9, C10, D10, E10, F#10, G10, A10, B10, C11, D11, E11, F#11, G11, A11, B11, C12, D12, E12, F#12, G12, A12, B12, C13, D13, E13, F#13, G13, A13, B13, C14, D14, E14, F#14, G14, A14, B14, C15, D15, E15, F#15, G15, A15, B15, C16, D16, E16, F#16, G16, A16, B16, C17, D17, E17, F#17, G17, A17, B17, C18, D18, E18, F#18, G18, A18, B18, C19, D19, E19, F#19, G19, A19, B19, C20, D20, E20, F#20, G20, A20, B20, C21, D21, E21, F#21, G21, A21, B21, C22, D22, E22, F#22, G22, A22, B22, C23, D23, E23, F#23, G23, A23, B23, C24, D24, E24, F#24, G24, A24, B24, C25, D25, E25, F#25, G25, A25, B25, C26, D26, E26, F#26, G26, A26, B26, C27, D27, E27, F#27, G27, A27, B27, C28, D28, E28, F#28, G28, A28, B28, C29, D29, E29, F#29, G29, A29, B29, C30, D30, E30, F#30, G30, A30, B30, C31, D31, E31, F#31, G31, A31, B31, C32, D32, E32, F#32, G32, A32, B32, C33, D33, E33, F#33, G33, A33, B33, C34, D34, E34, F#34, G34, A34, B34, C35, D35, E35, F#35, G35, A35, B35, C36, D36, E36, F#36, G36, A36, B36, C37, D37, E37, F#37, G37, A37, B37, C38, D38, E38, F#38, G38, A38, B38, C39, D39, E39, F#39, G39, A39, B39, C40, D40, E40, F#40, G40, A40, B40, C41, D41, E41, F#41, G41, A41, B41, C42, D42, E42, F#42, G42, A42, B42, C43, D43, E43, F#43, G43, A43, B43, C44, D44, E44, F#44, G44, A44, B44, C45, D45, E45, F#45, G45, A45, B45, C46, D46, E46, F#46, G46, A46, B46, C47, D47, E47, F#47, G47, A47, B47, C48, D48, E48, F#48, G48, A48, B48, C49, D49, E49, F#49, G49, A49, B49, C50, D50, E50, F#50, G50, A50, B50, C51, D51, E51, F#51, G51, A51, B51, C52, D52, E52, F#52, G52, A52, B52, C53, D53, E53, F#53, G53, A53, B53, C54, D54, E54, F#54, G54, A54, B54, C55, D55, E55, F#55, G55, A55, B55, C56, D56, E56, F#56, G56, A56, B56, C57, D57, E57, F#57, G57, A57, B57, C58, D58, E58, F#58, G58, A58, B58, C59, D59, E59, F#59, G59, A59, B59, C60, D60, E60, F#60, G60, A60, B60, C61, D61, E61, F#61, G61, A61, B61, C62, D62, E62, F#62, G62, A62, B62, C63, D63, E63, F#63, G63, A63, B63, C64, D64, E64, F#64, G64, A64, B64, C65, D65, E65, F#65, G65, A65, B65, C66, D66, E66, F#66, G66, A66, B66, C67, D67, E67, F#67, G67, A67, B67, C68, D68, E68, F#68, G68, A68, B68, C69, D69, E69, F#69, G69, A69, B69, C70, D70, E70, F#70, G70, A70, B70, C71, D71, E71, F#71, G71, A71, B71, C72, D72, E72, F#72, G72, A72, B72, C73, D73, E73, F#73, G73, A73, B73, C74, D74, E74, F#74, G74, A74, B74, C75, D75, E75, F#75, G75, A75, B75, C76, D76, E76, F#76, G76, A76, B76, C77, D77, E77, F#77, G77, A77, B77, C78, D78, E78, F#78, G78, A78, B78, C79, D79, E79, F#79, G79, A79, B79, C80, D80, E80, F#80, G80, A80, B80, C81, D81, E81, F#81, G81, A81, B81, C82, D82, E82, F#82, G82, A82, B82, C83, D83, E83, F#83, G83, A83, B83, C84, D84, E84, F#84, G84, A84, B84, C85, D85, E85, F#85, G85, A85, B85, C86, D86, E86, F#86, G86, A86, B86, C87, D87, E87, F#87, G87, A87, B87, C88, D88, E88, F#88, G88, A88, B88, C89, D89, E89, F#89, G89, A89, B89, C90, D90, E90, F#90, G90, A90, B90, C91, D91, E91, F#91, G91, A91, B91, C92, D92, E92, F#92, G92, A92, B92, C93, D93, E93, F#93, G93, A93, B93, C94, D94, E94, F#94, G94, A94, B94, C95, D95, E95, F#95, G95, A95, B95, C96, D96, E96, F#96, G96, A96, B96, C97, D97, E97, F#97, G97, A97, B97, C98, D98, E98, F#98, G98, A98, B98, C99, D99, E99, F#99, G99, A99, B99, C100, D100, E100, F#100, G100, A100, B100, C101, D101, E101, F#101, G101, A101, B101, C102, D102, E102, F#102, G102, A102, B102, C103, D103, E103, F#103, G103, A103, B103, C104, D104, E104, F#104, G104, A104, B104, C105, D105, E105, F#105, G105, A105, B105, C106, D106, E106, F#106, G106, A106, B106, C107, D107, E107, F#107, G107, A107, B107, C108, D108, E108, F#108, G108, A108, B108, C109, D109, E109, F#109, G109, A109, B109, C110, D110, E110, F#110, G110, A110, B110, C111, D111, E111, F#111, G111, A111, B111, C112, D112, E112, F#112, G112, A112, B112, C113, D113, E113, F#113, G113, A113, B113, C114, D114, E114, F#114, G114, A114, B114, C115, D115, E115, F#115, G115, A115, B115, C116, D116, E116, F#116, G116, A116, B116, C117, D117, E117, F#117, G117, A117, B117, C118, D118, E118, F#118, G118, A118, B118, C119, D119, E119, F#119, G119, A119, B119, C120, D120, E120, F#120, G120, A120, B120, C121, D121, E121, F#121, G121, A121, B121, C122, D122, E122, F#122, G122, A122, B122, C123, D123, E123, F#123, G123, A123, B123, C124, D124, E124, F#124, G124, A124, B124, C125, D125, E125, F#125, G125, A125, B125, C126, D126, E126, F#126, G126, A126, B126, C127, D127, E127, F#127, G127, A127, B127, C128, D128, E128, F#128, G128, A128, B128, C129, D129, E129, F#129, G129, A129, B129, C130, D130, E130, F#130, G130, A130, B130, C131, D131, E131, F#131, G131, A131, B131, C132, D132, E132, F#132, G132, A132, B132, C133, D133, E133, F#133, G133, A133, B133, C134, D134, E134, F#134, G134, A134, B134, C135, D135, E135, F#135, G135, A135, B135, C136, D136, E136, F#136, G136, A136, B136, C137, D137, E137, F#137, G137, A137, B137, C138, D138, E138, F#138, G138, A138, B138, C139, D139, E139, F#139, G139, A139, B139, C140, D140, E140, F#140, G140, A140, B140, C141, D141, E141, F#141, G141, A141, B141, C142, D142, E142, F#142, G142, A142, B142, C143, D143, E143, F#143, G143, A143, B143, C144, D144, E144, F#144, G144, A144, B144, C145, D145, E145, F#145, G145, A145, B145, C146, D146, E146, F#146, G146, A146, B146, C147, D147, E147, F#147, G147, A147, B147, C148, D148, E148, F#148, G148, A148, B148, C149, D149, E149, F#149, G149, A149, B149, C150, D150, E150, F#150, G150, A150, B150, C151, D151, E151, F#151, G151, A151, B151, C152, D152, E152, F#152, G152, A152, B152, C153, D153, E153, F#153, G153, A153, B153, C154, D154, E154, F#154, G154, A154, B154, C155, D155, E155, F#155, G155, A155, B155, C156, D156, E156, F#156, G156, A156, B156, C157, D157, E157, F#157, G157, A157, B157, C158, D158, E158, F#158, G158, A158, B158, C159, D159, E159, F#159, G159, A159, B159, C160, D160, E160, F#160, G160, A160, B160, C161, D161, E161, F#161, G161, A161, B161, C162, D162, E162, F#162, G162, A162, B162, C163, D163, E163, F#163, G163, A163, B163, C164, D164, E164, F#164, G164, A164, B164, C165, D165, E165, F#165, G165, A165, B165, C166, D166, E166, F#166, G166, A166, B166, C167, D167, E167, F#167, G167, A167, B167, C168, D168, E168, F#168, G168, A168, B168, C169, D169, E169, F#169, G169, A169, B169, C170, D170, E170, F#170, G170, A170, B170, C171, D171, E171, F#171, G171, A171, B171, C172, D172, E172, F#172, G172, A172, B172, C173, D173, E173, F#173, G173, A173, B173, C174, D174, E174, F#174, G174, A174, B174, C175, D175, E175, F#175, G175, A175, B175, C176, D176, E176, F#176, G176, A176, B176, C177, D177, E177, F#177, G177, A177, B177, C178, D178, E178, F#178, G178, A178, B178, C179, D179, E179, F#179, G179, A179, B179, C180, D180, E180, F#180, G180, A180, B180, C181, D181, E181, F#181, G181, A181, B181, C182, D182, E182, F#182, G182, A182, B182, C183, D183, E183, F#183, G183, A183, B183, C184, D184, E184, F#184, G184, A184, B184, C185, D185, E185, F#185, G185, A185, B185, C186, D186, E186, F#186, G186, A186, B186, C187, D187, E187, F#187, G187, A187, B187, C188, D188, E188, F#188, G188, A188, B188, C189, D189, E189, F#189, G189, A189, B189, C190, D190, E190, F#190, G190, A190, B190, C191, D191, E191, F#191, G191, A191, B191, C192, D192, E192, F#192, G192, A192, B192, C193, D193, E193, F#193, G193, A193, B193, C194, D194, E194, F#194, G194, A194, B194, C195, D195, E195, F#195, G195, A195, B195, C196, D196, E196, F#196, G196, A196, B196, C197, D197, E197, F#197, G197, A197, B197, C198, D198, E198, F#198, G198, A198, B198, C199, D199, E199, F#199, G199, A199, B199, C200, D200, E200, F#200, G200, A200, B200, C201, D201, E201, F#201, G201, A201, B201, C202, D202, E202, F#202, G202, A202, B202, C203, D203, E203, F#203, G203, A203, B203, C204, D204, E204, F#204, G204, A204, B204, C205, D205, E205, F#205, G205, A205, B205, C206, D206, E206, F#206, G206, A206, B206, C207, D207, E207, F#207, G207, A207, B207, C208, D208, E208, F#208, G208, A208, B208, C209, D209, E209, F#209, G209, A209, B209, C210, D210, E210, F#210, G210, A210, B210, C211, D211, E211, F#211, G211, A211, B211, C212, D212, E212, F#212, G212, A212, B212, C213, D213, E213, F#213, G213, A213, B213, C214, D214, E214, F#214, G214, A214, B214, C215, D215, E215, F#215, G215, A215, B215, C216, D216, E216, F#216, G216, A216, B216, C217, D217, E217, F#217, G217, A217, B217, C218, D218, E218, F#218, G218, A218, B218, C219, D219, E219, F#219, G219, A219, B219, C220, D220, E220, F#220, G220, A220, B220, C221, D221, E221, F#221, G221, A221, B221, C222, D222, E222, F#222, G222, A222, B222, C223, D223, E223, F#223, G223, A223, B223, C224, D224, E224, F#224, G224, A224, B224, C225, D225, E225, F#225, G225, A225, B225, C226, D226, E226, F#226, G226, A226, B226, C227, D227, E227, F#227, G227, A227, B227, C228, D228, E228, F#228, G228, A228, B228, C229, D229, E229, F#229, G229, A229, B229, C230, D230, E230, F#230, G230, A230, B230, C231, D231, E231, F#231, G231, A231, B231, C232, D232, E232, F#232, G232, A232, B232, C233, D233, E233, F#233, G233, A233, B233, C234, D234, E234, F#234, G234, A234, B234, C235, D235, E235, F#235, G235, A235, B235, C236, D236, E236, F#236, G236, A236, B236, C237, D237, E237, F#237, G237, A237, B237, C238, D238, E238, F#238, G238, A238, B238, C239, D239, E239, F#239, G239, A239, B239, C240, D240, E240, F#240, G240, A240, B240, C241, D241, E241, F#241, G241, A241, B241, C242, D242, E242, F#242, G242, A242, B242, C243, D243, E243, F#243, G243, A243, B243, C244, D244, E244, F#244, G244, A244, B244, C245, D245, E245, F#245, G245, A245, B245, C246, D246, E246, F#246, G246, A246, B246, C247, D247, E247, F#247, G247, A247, B247, C248, D248, E248, F#248, G248, A248, B248, C249, D249, E249, F#249, G249, A249, B249, C250, D250, E250, F#250, G250, A250, B250, C251, D251, E251, F#251, G251, A251, B251, C252, D252, E252, F#252, G252, A252, B252, C253, D253, E253, F#253, G253, A253, B253, C254, D254, E254, F#254, G254, A254, B254, C255, D255, E255, F#255, G255, A255, B255, C256, D256, E256, F#256, G256, A256, B256, C257, D257, E257, F#257, G257, A257, B257, C258, D258, E258, F#258, G258, A258, B258, C259, D259, E259, F#259, G259, A259, B259, C260, D260, E260, F#260, G260, A260, B260, C261, D261, E261, F#261, G261, A261, B261, C262, D262, E262, F#262, G262, A262, B262, C263, D263, E263, F#263, G263, A263, B263, C264, D264, E264, F#264, G264, A264, B264, C265, D265, E265, F#265, G265, A265, B265, C266, D266, E266, F#266, G266, A266, B266, C267, D267, E267, F#267, G267, A267, B267, C268, D268, E268, F#268, G268, A268, B268, C269, D269, E269, F#269, G269, A269, B269, C270, D270, E270, F#270, G270, A270, B270, C271, D271, E271, F#271, G271, A271, B271, C272, D272, E272, F#272, G272, A272, B272, C273, D273, E273, F#273, G273, A273, B273, C274, D274, E274, F#274, G274, A274, B274, C275, D275, E275, F#275, G275, A275, B275, C276, D276, E276, F#276, G276, A276, B276, C277, D277, E277, F#277, G277, A277, B277, C278, D278, E278, F#278, G278, A278, B278, C279, D279, E279, F#279, G279, A279, B279, C280, D280, E280, F#280, G280, A280, B280, C281, D281, E281, F#281, G281, A281, B281, C282, D282, E282, F#282, G282, A282, B282, C283, D283, E283, F#283, G283, A283, B283, C284, D284, E284, F#284, G284, A284, B284, C285, D285, E285, F#285, G285, A285, B285, C286, D286, E286, F#286, G286, A286, B286, C287, D287, E287, F#287, G287, A287, B287, C288, D288, E288, F#288, G288, A288, B288, C289, D289, E289, F#289, G289, A289, B289, C290, D290, E290, F#290, G290, A290, B290, C291, D291, E291, F#291, G291, A291, B291, C292, D292, E292, F#292, G292, A292, B292, C293, D293, E293, F#293, G293, A293, B293, C294, D294, E294, F#294, G294, A294, B294, C295, D295, E295, F#295, G295, A295, B295, C296, D296, E296, F#296, G296, A296, B296, C297, D297, E297, F#297, G297, A297, B297, C298, D298, E298, F#298, G298, A298, B298, C299, D299, E299, F#299, G299, A299, B299, C300, D300, E300, F#300, G300, A300, B300, C301, D301, E301, F#301, G301, A301, B301, C302, D302, E302, F#302, G302, A302, B302, C303, D303, E303, F#303, G303, A303, B303, C304, D304, E304, F#304, G304, A304, B304, C305, D305, E305, F#305, G305, A305, B305, C306, D306, E306, F#306, G306, A306, B306, C307, D307, E307, F#307, G307, A307, B307, C308, D308, E308, F#308, G308, A308, B308, C309, D309, E309, F#309, G309, A309, B309, C310, D310, E310, F#310, G310, A310, B310, C311, D311, E311, F#311, G311, A311, B311, C312, D312, E312, F#312, G312, A312, B312, C313, D313, E313, F#313, G313, A313, B313, C314, D314, E314, F#314, G314, A314, B314, C315, D315, E315, F#315, G315, A315, B315, C316, D316, E316, F#316, G316, A316, B316, C317, D317, E317, F#317, G317, A317, B317, C318, D318, E318, F#318, G318, A318, B318, C319, D319, E319, F#319, G319, A319, B319, C320, D320, E320, F#320, G320, A320, B320, C321, D321, E321, F#321, G321, A321, B321, C322, D322, E322, F#322, G322, A322, B322, C323, D323, E323, F#323, G323, A323, B323, C324, D324, E324, F#324, G324, A324, B324, C325, D325, E325, F#325, G325, A325, B325, C326, D326, E326, F#326, G326, A326, B326, C327, D327, E327, F#327, G327, A327, B327, C328, D328, E328, F#328, G328, A328, B328, C329, D329, E329, F#329, G329, A329, B329, C330, D330, E330, F#330, G330, A330, B330, C331, D331, E331, F#331, G331, A331, B331, C332, D332, E332, F#332, G332, A332, B332, C333, D333, E333, F#333, G333, A333, B333, C334, D334, E334, F#334, G334, A334, B334, C335, D335, E335, F#335, G335, A335, B335, C336, D336, E336, F#336, G336, A336, B336, C337, D337, E337, F#337, G337, A337, B337, C338, D338, E338, F#338, G338, A338, B338, C339, D339, E339, F#339, G339, A339, B339, C340, D340, E340, F#340, G340, A340, B340, C341, D341, E341, F#341, G341, A341, B341, C342, D342, E342, F#342, G342, A342, B342, C343, D343, E343, F#343, G343, A343, B343, C344, D344, E344, F#344, G344, A344, B344, C345, D345, E345, F#345, G345, A345, B345, C346, D346, E346, F#346, G346, A346, B346, C347, D347, E347, F#347, G347, A347, B347, C348, D348, E348, F#348, G348, A348, B348, C349, D349, E349, F#349, G349, A349, B349, C350, D350, E350, F#350, G350, A350, B350, C351, D351, E351, F#351, G351, A351, B351, C352, D352, E352, F#352, G352, A352, B352, C353, D353, E353, F#353, G353, A353, B353, C354, D354, E354, F#354, G354, A354, B354, C355, D355, E355, F#355, G355, A355, B355, C356, D356, E356, F#356, G356, A356, B356, C357, D357, E357, F#357, G357, A357, B357, C358, D358, E358, F#358, G358, A358, B358, C359, D359, E359, F#359, G359, A359, B359, C360, D360, E360, F#360, G360, A360, B360, C361, D361, E361, F#361, G361, A361, B361, C362, D362, E362, F#362, G362, A362, B362, C363, D363

Joe Frazier Bass Part

Jeff Berlin

Fretless Bass Guitar

Musical notation for Fretless Bass Guitar, measures 1-2. The staff shows a complex melodic line with many accidentals and slurs.

3

Bass

Musical notation for Bass, measure 3. The staff shows a complex melodic line with many accidentals and slurs.

5

Bass

Musical notation for Bass, measure 5. The staff shows a complex melodic line with many accidentals and slurs.

7

Bass

Musical notation for Bass, measure 7. The staff shows a complex melodic line with many accidentals and slurs.

9

Bass

Musical notation for Bass, measure 9. The staff shows a complex melodic line with many accidentals and slurs.

11

Bass

Musical notation for Bass, measure 11. The staff shows a complex melodic line with many accidentals and slurs.

13

Bass

Musical notation for Bass, measure 13. The staff shows a complex melodic line with many accidentals and slurs.

15

Bass

Musical notation for Bass, measure 15. The staff shows a complex melodic line with many accidentals and slurs.

17

Bass

Musical notation for Bass, measure 17. The staff shows a complex melodic line with many accidentals and slurs.

19

Bass

Musical notation for Bass, measure 19. The staff shows a complex melodic line with many accidentals and slurs.

21

Bass

Musical notation for Bass, measure 21. The staff shows a complex melodic line with many accidentals and slurs.

23

Bass

25

Bass

27

Bass

29

Bass

31

Bass

34

Bass

36

Bass

38

Bass

41

Bass

44

Bass

46

Bass

49 Bass

51 Bass

53 Bass

56 Bass

59 Bass

61 Bass

64 Bass

66 Bass

68 Bass

70 Bass

72 Bass

74 Bass

76 Bass

78 Bass

80 Bass

82 Bass

84 Bass

86 Bass

88 Bass

90 Bass

92 Bass

94 Bass

97 Bass

Measure 97: Bass line starting with a treble clef and a key signature of one flat. The staff contains a complex melodic line with many beamed eighth notes and sixteenth notes, including a triplet of eighth notes. A fermata is placed over the final note of the measure.

100 Bass

Measure 100: Bass line with a treble clef and one flat key signature. It features a melodic line with beamed eighth notes and a triplet of eighth notes. A trill is indicated above a note in the middle of the measure.

103 Bass

Measure 103: Bass line with a treble clef and one flat key signature. The staff shows a melodic line with beamed eighth notes and a fermata over the final note.

105 Bass

Measure 105: Bass line with a treble clef and one flat key signature. The staff contains a melodic line with beamed eighth notes and a fermata over the final note.

107 Bass

Measure 107: Bass line with a treble clef and one flat key signature. The staff shows a melodic line with beamed eighth notes and a fermata over the final note.

109 Bass

Measure 109: Bass line with a treble clef and one flat key signature. The staff contains a melodic line with beamed eighth notes and a fermata over the final note.

111 Bass

Measure 111: Bass line with a treble clef and one flat key signature. The staff shows a melodic line with beamed eighth notes and a fermata over the final note.

113 Bass

Measure 113: Bass line with a treble clef and one flat key signature. The staff contains a melodic line with beamed eighth notes and a fermata over the final note.

115 Bass

Measure 115: Bass line with a treble clef and one flat key signature. The staff shows a melodic line with beamed eighth notes and a fermata over the final note.

117 Bass

Measure 117: Bass line with a treble clef and one flat key signature. The staff contains a melodic line with beamed eighth notes and a fermata over the final note.

119 Bass

Measure 119: Bass line with a treble clef and one flat key signature. The staff shows a melodic line with beamed eighth notes and a fermata over the final note.

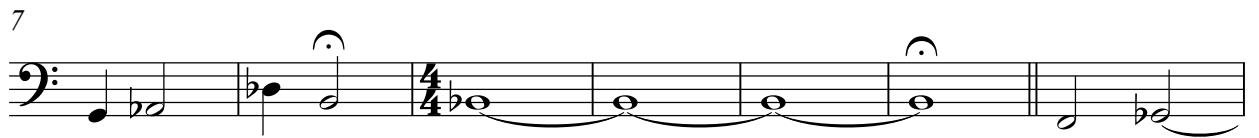
Q.E.D. - Jeff Berlin Bass

Electric Bass




7

E. Bass




14

E. Bass



19

E. Bass



24

E. Bass



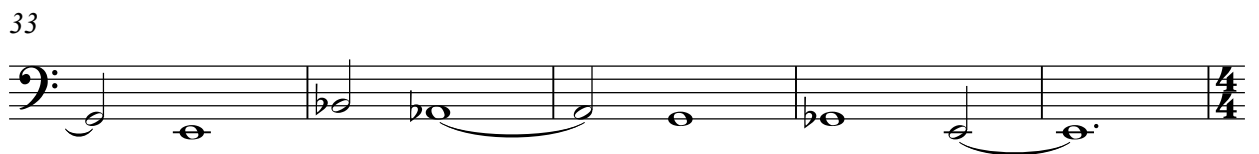
29

E. Bass



33

E. Bass



38

E. Bass



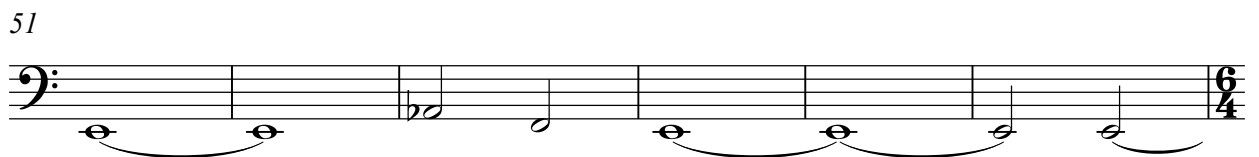
44

E. Bass



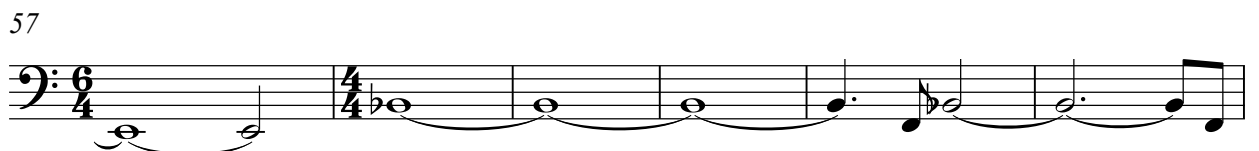
51

E. Bass



57

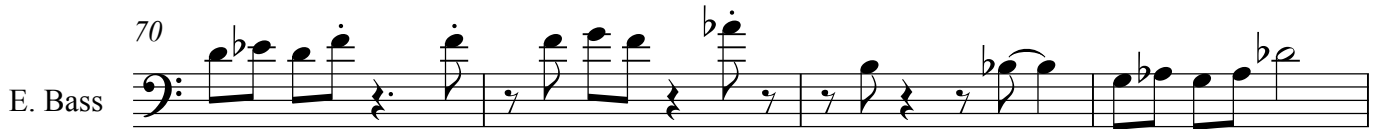
E. Bass



63



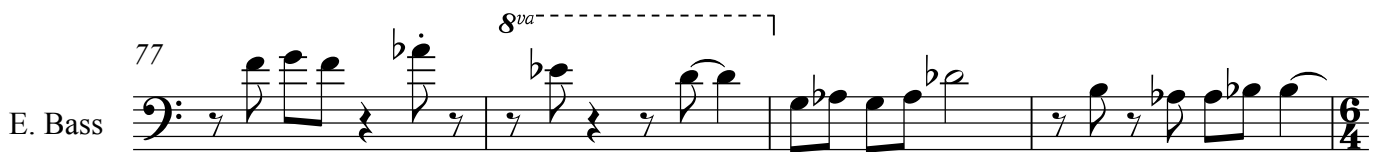
70



74



77



81



84



88



92



96



100



104



108

E. Bass

112

E. Bass

116

E. Bass

120

E. Bass

124

E. Bass

128

E. Bass

131

E. Bass

134

E. Bass

138

E. Bass

142

E. Bass

147

E. Bass

152
E. Bass

154
E. Bass

156
E. Bass

158
E. Bass

160
E. Bass

162
E. Bass

164
E. Bass

166
E. Bass

168
E. Bass

170
E. Bass

172
E. Bass

174

E. Bass

176

E. Bass

178

E. Bass

181

E. Bass

184

E. Bass

187

E. Bass

190

E. Bass

193

E. Bass

196

E. Bass

199

E. Bass

202

vague

E. Bass

205



208



211



214



217



222



226



230



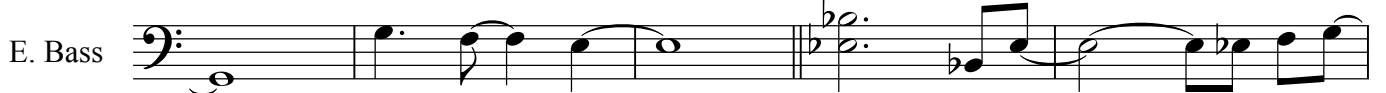
234



238



241



246
E. Bass



250
E. Bass




254
E. Bass



258
E. Bass



262
E. Bass



266
E. Bass



270
E. Bass



274
E. Bass



278
E. Bass



282
E. Bass



35

Bass

Musical staff for measure 35, bass clef, key signature of three sharps (F#, C#, G#). The staff contains a sequence of eighth and sixteenth notes with rests, and a change in time signature to 3/8.

39

Bass

Musical staff for measure 39, bass clef, key signature of three sharps. The staff contains a sequence of eighth and sixteenth notes with rests, and a change in time signature to 3/8.

44

Bass

Musical staff for measure 44, bass clef, key signature of three sharps. The staff contains a sequence of eighth and sixteenth notes with rests, and a change in time signature to 4/4.

47

Bass

Musical staff for measure 47, bass clef, key signature of three sharps. The staff contains a sequence of eighth and sixteenth notes with rests, and a change in time signature to 4/4. A repeat sign is present with a 'x4' multiplier.

49

Bass

Musical staff for measure 49, bass clef, key signature of three sharps. The staff contains a sequence of eighth and sixteenth notes with rests, and a change in time signature to 3/4. A first ending bracket labeled '1-3' and a second ending bracket labeled '4' are present.

52

Bass

Musical staff for measure 52, bass clef, key signature of three sharps. The staff contains a sequence of eighth and sixteenth notes with rests, and a change in time signature to 3/4. A repeat sign is present with a 'x3' multiplier.

55

Bass

Musical staff for measure 55, bass clef, key signature of three sharps. The staff contains a sequence of eighth and sixteenth notes with rests, and a change in time signature to 6/4. A repeat sign is present with a '23' multiplier.

59

Bass

Musical staff for measure 59, bass clef, key signature of three sharps. The staff contains a sequence of eighth and sixteenth notes with rests, and a change in time signature to 4/4. A repeat sign is present with a 'x3' multiplier.

62

Bass

Musical staff for measure 62, bass clef, key signature of three sharps. The staff contains a sequence of eighth and sixteenth notes with rests, and a change in time signature to 4/4.

64

Bass

Musical staff for measure 64, bass clef, key signature of three sharps. The staff contains a sequence of eighth and sixteenth notes with rests, and a change in time signature to 3/8.

68

Bass

Musical staff for measure 68, bass clef, key signature of three sharps. The staff contains a sequence of eighth and sixteenth notes with rests, and a change in time signature to 3/8.

73

Bass

Measure 73: Bass line in 4/4 time, key of D major. The first two measures contain eighth-note patterns. The third measure has a 3/8 time signature change, and the fourth measure returns to 4/4 with a triplet of eighth notes.

76

Bass

Measure 76: Bass line in 4/4 time, key of D major. The first two measures contain eighth-note patterns. The third measure has a 3/8 time signature change, and the fourth measure returns to 4/4 with a triplet of eighth notes.

79

Bass

Measure 79: Bass line in 4/4 time, key of D major. The first two measures contain eighth-note patterns. The third measure has a 3/8 time signature change, and the fourth measure returns to 4/4 with a triplet of eighth notes.

82

Bass

Measure 82: Bass line in 4/4 time, key of D major. The first two measures contain eighth-note patterns. The third measure has a 3/8 time signature change, and the fourth measure returns to 4/4 with a triplet of eighth notes.

85

Bass

Measure 85: Bass line in 4/4 time, key of D major. The first two measures contain eighth-note patterns. The third measure has a 3/8 time signature change, and the fourth measure returns to 4/4 with a triplet of eighth notes.

88

Bass

Measure 88: Bass line in 4/4 time, key of D major. The first two measures contain eighth-note patterns. The third measure has a 3/8 time signature change, and the fourth measure returns to 4/4 with a triplet of eighth notes.

91

Bass

Measure 91: Bass line in 4/4 time, key of D major. The first two measures contain eighth-note patterns. The third measure has a 3/8 time signature change, and the fourth measure returns to 4/4 with a triplet of eighth notes.

93

Fade

Bass

Measure 93: Bass line in 4/4 time, key of D major. The first two measures contain eighth-note patterns. The third measure has a 3/8 time signature change, and the fourth measure returns to 4/4 with a triplet of eighth notes.

Palewell Park - Jeff Berlin

22 *8va* Fm/A^b Fm Fm/E^b

Bass Guitar

6 Fmaj E^bm⁷ E^b Cm Fm⁷

Bass

(8)

11 G/D Gmaj⁷ E^bmaj⁷ Fm⁷ Fmaj/A

Bass

(8)

16 A^bmaj⁷ E⁷b⁵ Fm Em⁷ A^bmaj/E^b Fm

Bass

(8)

22 D^bmaj⁷ D^bmaj⁷ ~~Fm~~ Em

Bass

8va

26 A^bmaj⁷ D^bmaj⁷ Cmaj C⁷ Fm

Bass

31 Fm D^bmaj B^bmaj G^bmaj Bm D^bmaj G⁺

Bass

37 Cmaj Fmaj Fm F[#]maj A^bmaj *8va*

Bass

42 *8va* Cm Fm Fm/E^b

Bass

(8)

45 Fmaj E^bm

Bass

(8)

47 E^bm⁷ A^bmaj⁷ B^bmaj⁷

Bass

50 *8va* G/D 3 G Cm D^bmaj⁷

54 Cm E^bmaj

58 (8) 3 A^bmaj⁷

61 Gmaj⁷ A^bmaj⁷ 3 A^b+ 3 Fm

65 (8) Em⁷ A^bmaj⁷ B^bm

70 Cm 3 Fmaj E^bm

74 Fm B^bmaj G/D Gmaj

(8) 79 3 Fmaj A^bmaj E^{7b5} Fm Em

85 *8va* A^bmaj/E^b Cm B^bm Fm

Plans For J.D - Jeff Berlin Bass Part


Bass Guitar



4



8



11



15



18



22



25



28



31



34



38



41



45



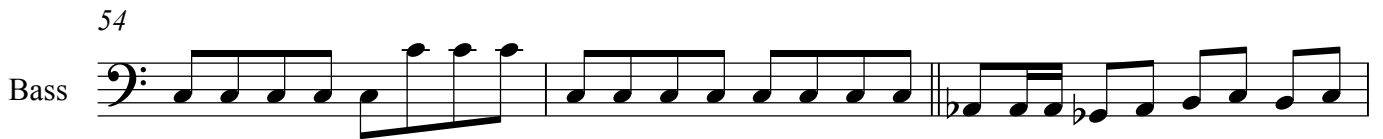
48



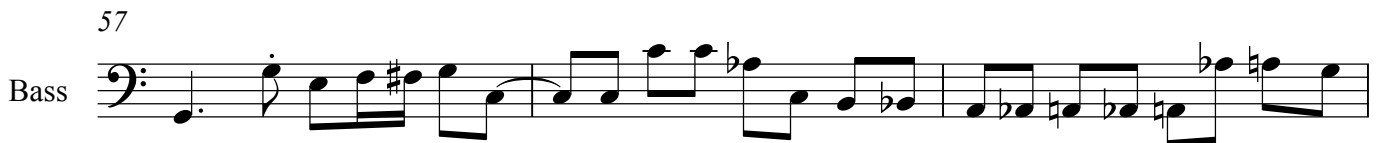
51



54



57



60



63



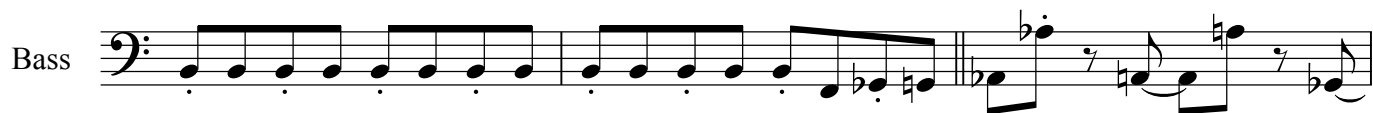
66



69



73



76



79



83



86



90



93



96



99



102



106



109



112



115



118



121



124



128



131



135



138



142



145
Bass

149
Bass

153
Bass

155
Bass

Fade

Land's End - Jeff Berlin Bass Part

Fretless Bass Guitar

Musical notation for Fretless Bass Guitar, measures 1-8. The staff is in bass clef with a 6/4 time signature. It features a melodic line with slurs and ties, ending with a double bar line and a 6/4 time signature.

9

Musical notation for Bass, measures 9-16. The staff is in bass clef. The time signature changes from 6/4 to 4/4 at measure 9. The notation includes various note values and accidentals.

17

Musical notation for Bass, measures 17-20. The staff is in bass clef with a 6/4 time signature. This section features complex triplet patterns indicated by '3' and brackets.

21

Musical notation for Bass, measures 21-27. The staff is in bass clef with a 4/4 time signature. It includes a long slur and triplet markings.

28

Musical notation for Bass, measures 28-33. The staff is in bass clef. The time signature changes from 4/4 to 6/4 at measure 28, then back to 4/4 at measure 33.

34

Musical notation for Bass, measures 34-40. The staff is in bass clef with a 6/4 time signature. The notation shows a mix of quarter and eighth notes.

41

Musical notation for Bass, measures 41-48. The staff is in bass clef with a 6/4 time signature. It features a steady melodic line.

49

Musical notation for Bass, measures 49-54. The staff is in bass clef with a 6/4 time signature. It includes a triplet marking and various note values.

55

Musical notation for Bass, measures 55-60. The staff is in bass clef with a 6/4 time signature. The notation includes a fermata and various note values.

61

Musical notation for Bass, measures 61-68. The staff is in bass clef with a 6/4 time signature. It features a fast-moving melodic line with a final slur.

119

Bass

126

Bass

133

Piano interlude

Bass

141

Bass

150

Bass

157

Bass

162 Tempo slows marginally

Bass

164

Bass

166

Bass

168

Bass

170

Bass

173

Bass

Musical staff for measure 173, bass clef. The staff contains a sequence of eighth and sixteenth notes with various accidentals (sharps, naturals, flats).

176

Bass

Musical staff for measure 176, bass clef. The staff contains a sequence of eighth and sixteenth notes with various accidentals. A triplet of eighth notes is indicated by a '3' below the staff.

179

Bass

Musical staff for measure 179, bass clef. The staff contains a sequence of eighth and sixteenth notes with various accidentals.

182

Bass

Musical staff for measure 182, bass clef. The staff contains a sequence of eighth and sixteenth notes with various accidentals.

184

Bass

Musical staff for measure 184, bass clef. The staff contains a sequence of eighth and sixteenth notes with various accidentals.

186

Bass

Musical staff for measure 186, bass clef. The staff contains a sequence of eighth and sixteenth notes with various accidentals.

189

Bass

Musical staff for measure 189, bass clef. The staff contains a sequence of eighth and sixteenth notes with various accidentals.

192

Bass

Musical staff for measure 192, bass clef. The staff contains a sequence of eighth and sixteenth notes with various accidentals.

195

Bass

Musical staff for measure 195, bass clef. The staff contains a sequence of eighth and sixteenth notes with various accidentals.

197

Bass

Musical staff for measure 197, bass clef. The staff contains a sequence of eighth and sixteenth notes with various accidentals.

199

Bass

Musical staff for measure 199, bass clef. The staff contains a sequence of eighth and sixteenth notes with various accidentals.

201



204



207



210



213



216



219



222



225



228



232



236

Bass

Musical notation for measure 236, bass clef. The measure is divided into four parts with time signatures 3/4, 4/4, 3/4, and 4/4. The notes are: quarter note G2, quarter note A2, quarter note B2, quarter note C3 (3/4); quarter rest, quarter note D2, quarter note E2, quarter note F2, quarter note G2 (4/4); quarter note A2, quarter note B2, quarter note C3, quarter note D3 (3/4); quarter note E3, quarter note F3, quarter note G3, quarter note A3 (4/4).

241

Bass

Musical notation for measure 241, bass clef. The measure is divided into four parts with time signatures 4/4, 6/4, 4/4, and 6/4. The notes are: quarter note G2 with a sharp sign, quarter note A2, quarter note B2, quarter note C3 (4/4); quarter note D3, quarter note E3, quarter note F3, quarter note G3 (6/4); quarter note A3, quarter note B3, quarter note C4, quarter note D4 (4/4); quarter note E4, quarter note F4, quarter note G4, quarter note A4 (6/4).

244

Bass

Musical notation for measure 244, bass clef. The measure is divided into four parts with time signatures 6/4, 4/4, 6/4, and 4/4. The notes are: quarter note G2 with a sharp sign, quarter note A2 with a sharp sign, quarter note B2 with a flat sign, quarter note C3 with a sharp sign, quarter note D3, quarter note E3 (6/4); quarter rest, quarter note F3, quarter note G3, quarter note A3, quarter note B3 (4/4); quarter note C4, quarter note D4, quarter note E4, quarter note F4 (6/4); quarter note G4, quarter note A4, quarter note B4, quarter note C5 (4/4).

247

Bass

Musical notation for measure 247, bass clef. The measure is divided into four parts with time signatures 4/4, 6/4, 4/4, and 6/4. The notes are: quarter note G2 with a sharp sign, quarter note A2, quarter note B2, quarter note C3 (4/4); quarter note D3, quarter note E3, quarter note F3, quarter note G3 (6/4); quarter note A3, quarter note B3, quarter note C4, quarter note D4 (4/4); quarter note E4, quarter note F4, quarter note G4, quarter note A4 (6/4).

250

Bass

Musical notation for measure 250, bass clef. The measure is divided into four parts with time signatures 6/4, 4/4, 6/4, 4/4, and 6/4. The notes are: quarter note G2, quarter note A2, quarter note B2, quarter note C3 (6/4); quarter note D3, quarter note E3, quarter note F3, quarter note G3 (4/4); quarter note A3, quarter note B3, quarter note C4, quarter note D4 (6/4); quarter note E4, quarter note F4, quarter note G4, quarter note A4 (4/4); quarter note B4, quarter note C5, quarter note D5, quarter note E5 (6/4).

254

drum interlude

Bass

Musical notation for measure 254, bass clef. The measure is divided into four parts with time signatures 6/4, 4/4, 6/4, and 4/4. The notes are: quarter note G2, quarter note A2, quarter note B2, quarter note C3 (6/4); quarter note D3, quarter note E3, quarter note F3, quarter note G3 (4/4); quarter note A3, quarter note B3, quarter note C4, quarter note D4 (6/4); quarter note E4, quarter note F4, quarter note G4, quarter note A4 (4/4).

258

Bass

Musical notation for measure 258, bass clef. The measure is divided into four parts with time signatures 6/4, 4/4, 6/4, and 4/4. The notes are: whole rest, whole rest, whole rest, whole rest (6/4); quarter note G2, quarter note A2, quarter note B2, quarter note C3 (4/4); quarter note D3, quarter note E3, quarter note F3, quarter note G3 (6/4); quarter note A3, quarter note B3, quarter note C4, quarter note D4 (4/4).

266

Bass

Musical notation for measure 266, bass clef. The measure is divided into four parts with time signatures 6/4, 4/4, 6/4, and 4/4. The notes are: quarter note G2 with a sharp sign, quarter note A2, quarter note B2, quarter note C3 (6/4); quarter note D3, quarter note E3, quarter note F3, quarter note G3 (4/4); quarter note A3, quarter note B3, quarter note C4, quarter note D4 (6/4); quarter note E4, quarter note F4, quarter note G4, quarter note A4 (4/4).

273

Bass

Musical notation for measure 273, bass clef. The measure is divided into four parts with time signatures 6/4, 4/4, 6/4, and 4/4. The notes are: quarter note G2 with a sharp sign, quarter note A2, quarter note B2, quarter note C3 (6/4); quarter note D3, quarter note E3, quarter note F3, quarter note G3 (4/4); quarter note A3, quarter note B3, quarter note C4, quarter note D4 (6/4); quarter note E4, quarter note F4, quarter note G4, quarter note A4 (4/4).

278

Rall...

Bass

Musical notation for measure 278, bass clef. The measure is divided into four parts with time signatures 6/4, 4/4, 6/4, and 4/4. The notes are: quarter note G2, quarter note A2, quarter note B2, quarter note C3 (6/4); quarter note D3, quarter note E3, quarter note F3, quarter note G3 (4/4); quarter note A3, quarter note B3, quarter note C4, quarter note D4 (6/4); quarter note E4, quarter note F4, quarter note G4, quarter note A4 (4/4).

282

Bass

Musical notation for measure 282, bass clef. The measure is divided into four parts with time signatures 6/4, 4/4, 6/4, and 4/4. The notes are: quarter note G2, quarter note A2, quarter note B2, quarter note C3 (6/4); quarter note D3, quarter note E3, quarter note F3, quarter note G3 (4/4); quarter note A3, quarter note B3, quarter note C4, quarter note D4 (6/4); quarter note E4, quarter note F4, quarter note G4, quarter note A4 (4/4).