


# Tubular Bells Part Two - Mike Oldfield Bass

6

Bass Guitar 

7

Bass 

x6

15

Bass 

24

Bass 


33

Bass 

42

Bass 

51

Bass 

60

Bass 

x8

68

Bass 

76

Bass 

Half time

35

56

83

Bass 

91

Bass 

98

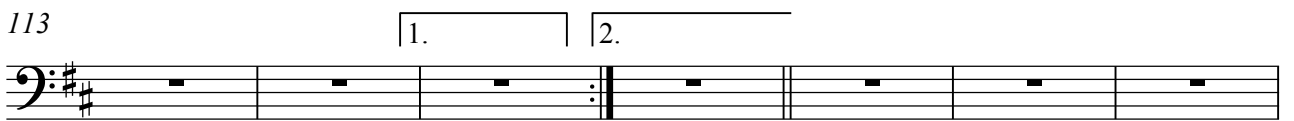
Bass 

106


Tempo slows

Bass 

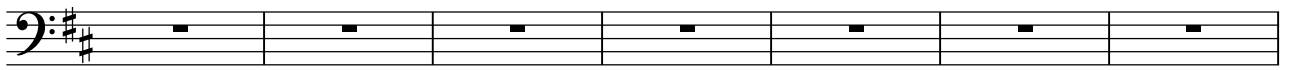
113

Bass 

120

Bass 

127

Bass 

134

Bass 

138

Bass 

142

Piltdown Man

Bass 

144

Bass 

146

Bass 

149



151



154



157



161



165



169



172



174



176



178



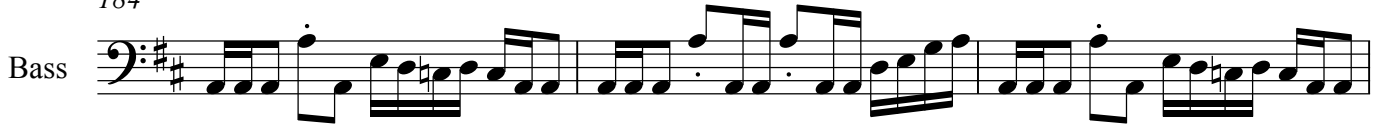
180



182



184



187



190



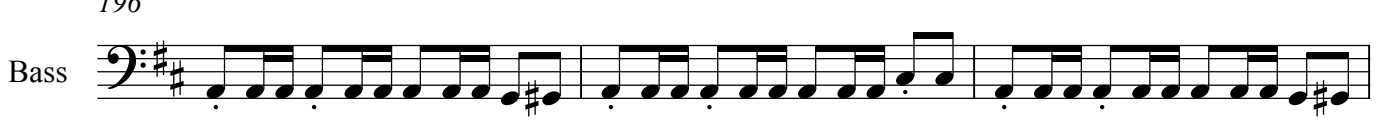
192



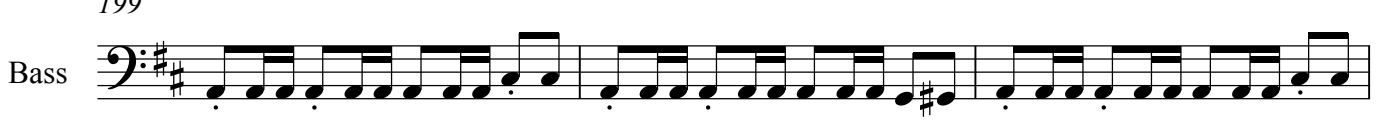
194



196



199



202



## 205 Piltdown Man



208



210



212



214



216



219



222



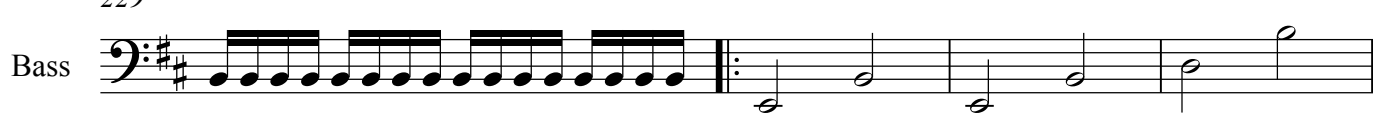
225



227



229



233

Bass

Musical staff for measure 233 in bass clef with a key signature of two sharps (F# and C#). The staff contains a sequence of notes: G2, A2, B2, C3, D3, E3, F#3, G3, A3, B3, C4. A triplet of notes (D3, E3, F#3) is indicated with a '3' below it.

238 x14

Bass

Musical staff for measure 238 in bass clef with a key signature of two sharps. It begins with a repeat sign over a G2 note, followed by a sequence of notes: A2, B2, C3, D3, E3, F#3, G3, A3, B3, C4. The measure is marked 'x14'.

243

Bass

Musical staff for measure 243 in bass clef with a key signature of two sharps, consisting of a series of eighth notes: G2, A2, B2, C3, D3, E3, F#3, G3, A3, B3, C4.

250 Pick up into Hornpipe

Bass

Musical staff for measure 250 in bass clef with a key signature of two sharps. It starts with a whole rest, followed by notes: G2, A2, B2, C3, D3, E3, F#3, G3, A3, B3, C4. A fermata is placed over the first G2 note.

255

Bass

Musical staff for measure 255 in bass clef with a key signature of two sharps, containing a sequence of eighth notes: G2, A2, B2, C3, D3, E3, F#3, G3, A3, B3, C4.

260

Bass

Musical staff for measure 260 in bass clef with a key signature of two sharps, containing a sequence of eighth notes: G2, A2, B2, C3, D3, E3, F#3, G3, A3, B3, C4.

264

Bass

Musical staff for measure 264 in bass clef with a key signature of two sharps, containing a sequence of eighth notes: G2, A2, B2, C3, D3, E3, F#3, G3, A3, B3, C4.

268

Bass

Musical staff for measure 268 in bass clef with a key signature of two sharps, containing a sequence of eighth notes: G2, A2, B2, C3, D3, E3, F#3, G3, A3, B3, C4.

272

Bass

Musical staff for measure 272 in bass clef with a key signature of two sharps, containing a sequence of eighth notes: G2, A2, B2, C3, D3, E3, F#3, G3, A3, B3, C4.

276 Repeat with variation and accelerating tempo last time

Bass

Musical staff for measure 276 in bass clef with a key signature of two sharps. It begins with a sequence of eighth notes: G2, A2, B2, C3, D3, E3, F#3, G3, A3, B3, C4. This is followed by a whole rest, then a sequence of notes: G2, A2, B2, C3, D3, E3, F#3, G3, A3, B3, C4. A bracket above the final notes is labeled 'last time'. The staff ends with a fermata and a 'v' marking below the final note.