

Easy Did It - Dave Holland Bass

String Bass

Measures 1-6: 3/4, 5/4, 3/4, 5/4, 3/4, 5/4. The bass line starts with a half note, followed by quarter notes, and ends with a half note.

7

Measures 7-12: 5/4, 3/4, 5/4, 3/4, 5/4, 3/4. The bass line features eighth notes and quarter notes with various accidentals.

13

Head

Measures 13-18: 5/4, 3/4, 5/4, 3/4, 5/4, 3/4. The word 'Head' is written above the staff in measure 14.

19

Measures 19-24: 5/4, 3/4, 5/4, 3/4, 5/4, 3/4. The bass line continues with eighth and quarter notes.

25

Measures 25-31: 3/4, 5/4, 3/4, 5/4, 3/4, 5/4. The bass line features a mix of quarter and eighth notes.

32

Measures 32-37: 5/4, 3/4, 5/4, 3/4, 5/4, 3/4. The bass line continues with eighth and quarter notes.

38

Measures 38-43: 5/4, 3/4, 5/4, 3/4, 5/4, 3/4. The bass line features eighth and quarter notes.

44

Measures 44-50: 3/4, 5/4, 3/4, 5/4, 3/4, 5/4. The bass line continues with eighth and quarter notes.

51

Measures 51-57: 5/4, 3/4, 5/4, 3/4, 5/4, 3/4. The bass line features eighth and quarter notes.

58

Measures 58-62: 5/4, 3/4, 5/4, 3/4, 5/4, 3/4. The bass line continues with eighth and quarter notes.

63

Measures 63-68: 5/4, 3/4, 5/4, 3/4, 5/4, 3/4. The bass line continues with eighth and quarter notes.

69



76

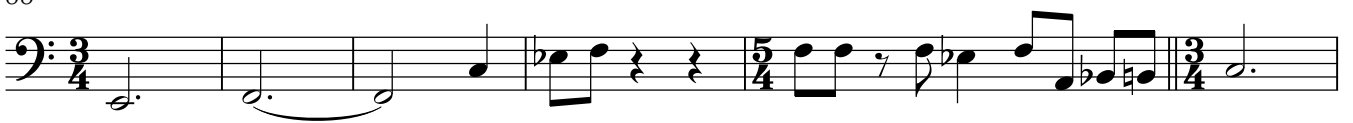
Trombone solo



83



88



94



100



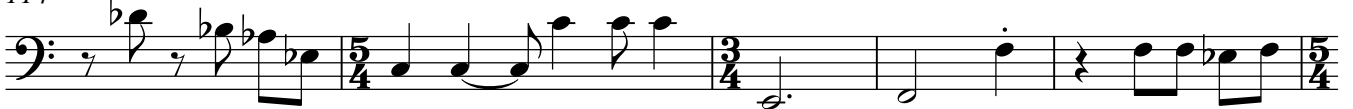
104



109



114



119



123



127



132



137



142



147



152



157



162



167



172



176



182



187



192



197

Marimba solo



204



208



213



218 similar...

