

Emeril Kicks It Up - Jeff Berlin Bass

Bass Guitar 

4

Bass 

7

Bass 

10

Bass 

13

Bass 

16

Bass 

19

Bass 

22

Bass 

25

Bass 

28

Bass 

31

Bass 

34

Bass  Musical staff for measure 34, bass clef, featuring a sequence of eighth and quarter notes with various accidentals.

37

Bass  Musical staff for measure 37, bass clef, featuring a sequence of eighth and quarter notes with various accidentals.

40

Bass  Musical staff for measure 40, bass clef, featuring a sequence of eighth and quarter notes with various accidentals.

Bass  Musical staff for measure 43, bass clef, featuring a triplet of eighth notes followed by a sequence of eighth and quarter notes with various accidentals.

46

Bass  Musical staff for measure 46, bass clef, featuring a sequence of quarter and eighth notes with various accidentals.

49

Bass  Musical staff for measure 49, bass clef, featuring a sequence of quarter and eighth notes with various accidentals.

52

Bass  Musical staff for measure 52, bass clef, featuring a sequence of quarter and eighth notes with various accidentals.

55

Bass  Musical staff for measure 55, bass clef, featuring a sequence of eighth notes, a triplet of eighth notes, and a sequence of eighth and quarter notes with various accidentals.

58

Bass  Musical staff for measure 58, bass clef, featuring a sequence of eighth notes, a fourth-note chord, and a sequence of eighth and quarter notes with various accidentals.

61

Bass  Musical staff for measure 61, bass clef, featuring a sequence of quarter and eighth notes with various accidentals.

64

Bass  Musical staff for measure 64, bass clef, featuring a sequence of quarter and eighth notes with various accidentals.

67 Bass

70 Bass

73 Bass

76 Bass

79 Bass

82 Bass

85 Bass

87 Bass

90 Bass

93 Bass

95 Bass

97 Bass

Musical staff for measure 97 in bass clef. It features a sequence of eighth notes with slurs and accents, including a sharp sign (#) on the eighth note. Four '4' time signatures are placed below the staff.

100 Bass

Musical staff for measure 100 in bass clef. It contains eighth notes with slurs and accents, including a flat sign (b) on the eighth note. The staff concludes with a double bar line.

103 Bass

Musical staff for measure 103 in bass clef. It features eighth notes with slurs and accents, including a flat sign (b) on the eighth note. Three '4' time signatures are placed below the staff.

105 Bass

Musical staff for measure 105 in bass clef. It contains eighth notes with slurs and accents, including a flat sign (b) on the eighth note. The word "drag" is written above the staff. The staff concludes with a double bar line.

107 Bass

Musical staff for measure 107 in bass clef. It features eighth notes with slurs and accents, including a flat sign (b) on the eighth note. The staff concludes with a double bar line.

110 Bass

Musical staff for measure 110 in bass clef. It contains eighth notes with slurs and accents, including a flat sign (b) on the eighth note. A '4' time signature is placed below the staff. The staff concludes with a double bar line.

113 Bass

Musical staff for measure 113 in bass clef. It features eighth notes with slurs and accents, including a flat sign (b) on the eighth note. The staff concludes with a double bar line.

116 Bass

Musical staff for measure 116 in bass clef. It contains eighth notes with slurs and accents, including a flat sign (b) on the eighth note. The staff concludes with a double bar line.

119 Bass

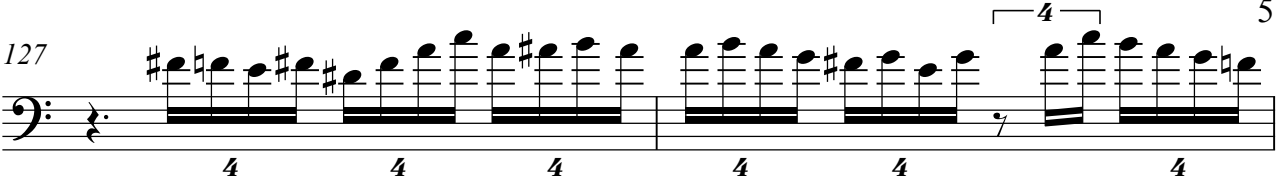
Musical staff for measure 119 in bass clef. It features eighth notes with slurs and accents, including a sharp sign (#) on the eighth note. Seven '4' time signatures are placed below the staff. The staff concludes with a double bar line.

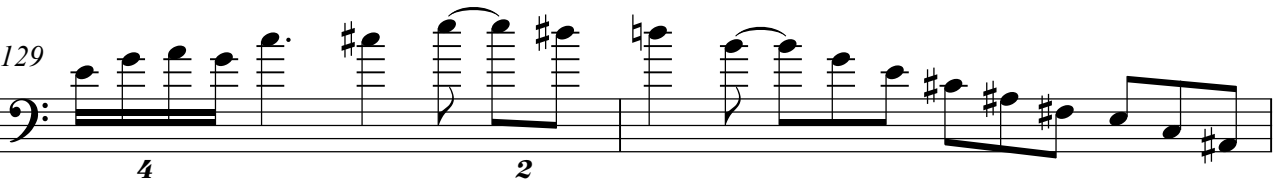
121 Bass

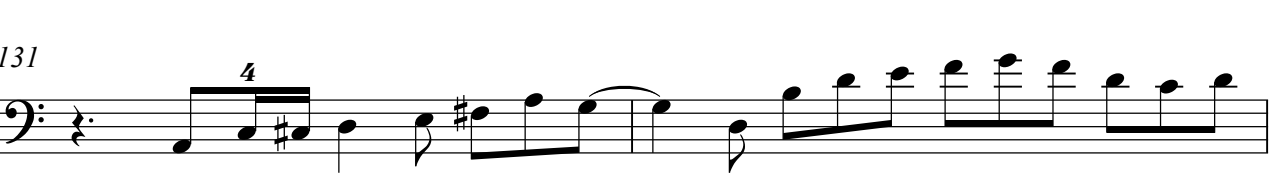
Musical staff for measure 121 in bass clef. It contains eighth notes with slurs and accents, including a sharp sign (#) on the eighth note. The staff concludes with a double bar line.

124 Bass

Musical staff for measure 124 in bass clef. It features eighth notes with slurs and accents, including a sharp sign (#) on the eighth note. Three '4' time signatures are placed below the staff. The staff concludes with a double bar line.

127 Bass 

129 Bass 

131 Bass 

133 Bass 

136 Bass 

139 Bass 

142 Bass 

145 Bass 

148 Bass 

151 Bass 

154 Bass 

157



160



163



166



169



172



175



178



181



184



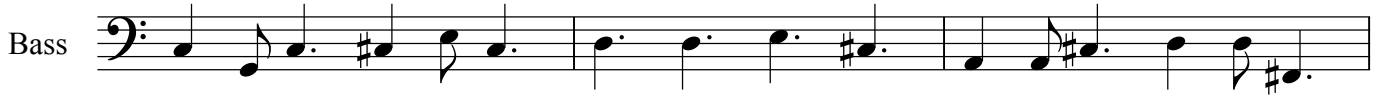
187



190



193



196



199



203



206



209



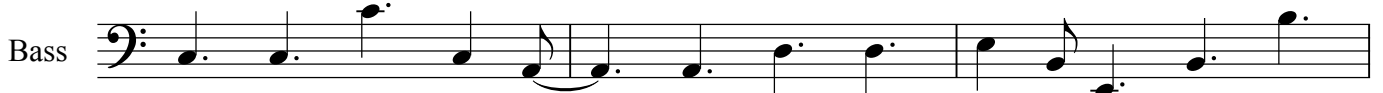
212



215



218



221



224

Bass

Musical staff for measure 224 in bass clef. It contains six measures of music with notes and rests.

227

Bass

Musical staff for measure 227 in bass clef. It contains six measures of music with notes and rests.

230

Bass

Musical staff for measure 230 in bass clef. It contains six measures of music with notes and rests.

233

Bass

Musical staff for measure 233 in bass clef. It contains six measures of music with notes and rests.

236

Bass

Musical staff for measure 236 in bass clef. It contains six measures of music with notes and rests.

239

Bass

Musical staff for measure 239 in bass clef. It contains six measures of music with notes and rests.

242

Bass

Musical staff for measure 242 in bass clef. It contains six measures of music with notes and rests.

245

Bass

Musical staff for measure 245 in bass clef. It contains six measures of music with notes and rests.

248

Bass

Musical staff for measure 248 in bass clef. It contains six measures of music with notes and rests.

251

Bass

Musical staff for measure 251 in bass clef. It contains six measures of music with notes and rests.

254

Bass

Musical staff for measure 254 in bass clef. It contains six measures of music with notes and rests.

256

Bass

A single musical staff in bass clef with a key signature of one sharp (F#). The notation includes a quarter note on the second line (F#), a quarter rest, a quarter note on the first space (C), a quarter note on the first line (F), a dotted quarter note on the first space (C), and a quarter note on the first line (F) with a wavy vibrato line above it. The second measure contains a quarter note on the first space (C) with an accent (>) below it, followed by a quarter rest, a quarter note on the first space (C), a quarter note on the first line (F), and a quarter note on the first space (C). The staff ends with a double bar line.