

# Sing Joy Spring

John Patitucci bass line on Manhattan Transfer's Vocalese album

Gm<sup>7</sup>

String Bass

**A**

6 G<sup>b7</sup> Fm<sup>7</sup> B<sup>b7</sup> E<sup>b</sup>maj<sup>7</sup> B<sup>b7</sup> E<sup>b</sup>maj<sup>7</sup>  
S. Bass

11 Fm<sup>7</sup> B<sup>b7</sup> E<sup>b</sup>maj<sup>7</sup> A<sup>b</sup>m<sup>7</sup> D<sup>b7</sup> Gm<sup>7</sup> G<sup>b7</sup> Fm<sup>7</sup> B<sup>b7</sup> E<sup>b</sup>maj<sup>7</sup>  
S. Bass

17 G<sup>b</sup>m<sup>7</sup> B<sup>7</sup> Emaj<sup>7</sup> F<sup>#</sup>m<sup>7</sup> B<sup>7</sup> Emaj<sup>7</sup> Am<sup>7</sup> D<sup>7</sup>  
S. Bass

22 Am<sup>7</sup> G<sup>7</sup> F<sup>#</sup>m<sup>7</sup> B<sup>7</sup> Emaj<sup>7</sup> Gm<sup>7</sup> C<sup>7</sup> Fmaj<sup>7</sup>  
S. Bass

27 Fm<sup>7</sup> B<sup>b7</sup> E<sup>b</sup>maj<sup>7</sup> E<sup>b</sup>m<sup>7</sup> A<sup>b7</sup> D<sup>b</sup>maj<sup>7</sup> F<sup>#</sup>m<sup>7</sup> B<sup>7</sup>  
S. Bass

32 Emaj<sup>7</sup> Fm<sup>7</sup> B<sup>b7</sup> E<sup>b</sup>maj<sup>7</sup> Fm<sup>7</sup> B<sup>b7</sup> E<sup>b</sup>maj<sup>7</sup>  
S. Bass

37 A<sup>b</sup>m<sup>7</sup> D<sup>b7</sup>  $\emptyset$  Gm<sup>7</sup> G<sup>b7</sup> Fm<sup>7</sup> B<sup>b7</sup> E<sup>b</sup>maj<sup>7</sup> Fm<sup>7</sup> B<sup>b7</sup>  
S. Bass

42  
S. Bass

47  
S. Bass

52

S. Bass

3

**B**

32 bar chord sequence continues

56

S. Bass

61

S. Bass

66

S. Bass

71

S. Bass

76

S. Bass

81

S. Bass

86

S. Bass

91

S. Bass

96

S. Bass

101

S. Bass

106

S. Bass




110

S. Bass



115

S. Bass



120

S. Bass



125

S. Bass



129

S. Bass



134

S. Bass



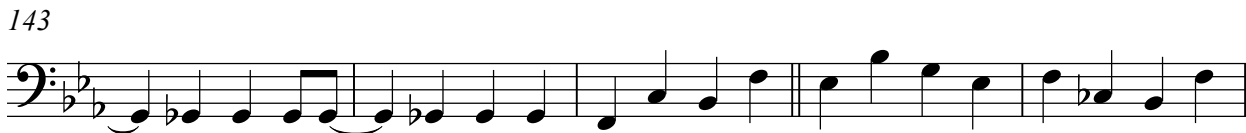
138

S. Bass




143

S. Bass




148

S. Bass



153

S. Bass



158

S. Bass



162

4.00

S. Bass



166

S. Bass



170

S. Bass



175

S. Bass



180

S. Bass



185

S. Bass



189

S. Bass



193

S. Bass



198

S. Bass



203

S. Bass



208



213



218



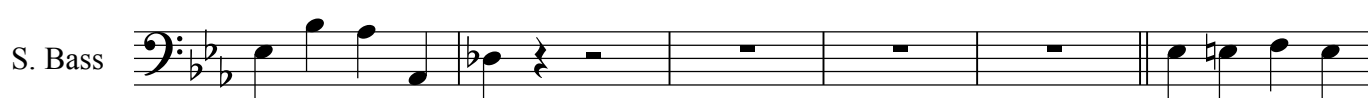
222



225



229

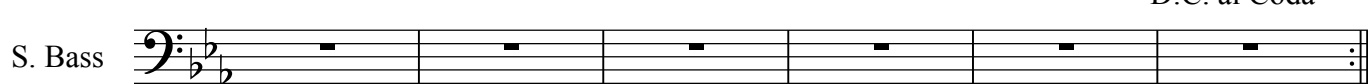


235

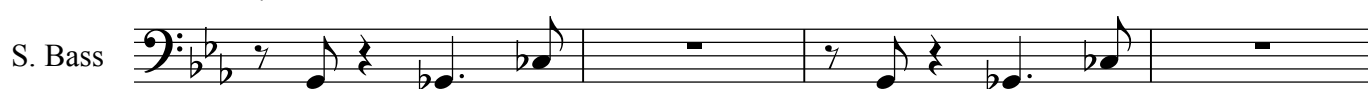


240

D.C. al Coda



246



250

