



55

Bass  Musical staff for measure 55, bass clef, key signature of two flats (B-flat and E-flat). The staff contains a sequence of 12 eighth notes: G2, A2, B-flat2, C3, D3, E-flat3, F3, G3, A3, B-flat3, C4, D4.

60

Bass  Musical staff for measure 60, bass clef, key signature of two flats. The staff contains a sequence of 12 eighth notes: E-flat3, F3, G3, A3, B-flat3, C4, D4, E4, F4, G4, A4, B-flat4.

65

Bass  Musical staff for measure 65, bass clef, key signature of two flats. The staff contains a sequence of 12 eighth notes: G3, A3, B-flat3, C4, D4, E4, F4, G4, A4, B-flat4, C5, D5.

70

Bass  Musical staff for measure 70, bass clef, key signature of two flats. The staff contains a sequence of 12 eighth notes: E4, F4, G4, A4, B-flat4, C5, D5, E5, F5, G5, A5, B-flat5.

75

Bass  Musical staff for measure 75, bass clef, key signature of two flats. The staff contains a sequence of 12 eighth notes: G4, A4, B-flat4, C5, D5, E5, F5, G5, A5, B-flat5, C6, D6.

80

Bass  Musical staff for measure 80, bass clef, key signature of two flats. The staff contains a sequence of 12 eighth notes: E5, F5, G5, A5, B-flat5, C6, D6, E6, F6, G6, A6, B-flat6.

85

Bass  Musical staff for measure 85, bass clef, key signature of two flats. The staff contains a sequence of 12 eighth notes: G5, A5, B-flat5, C6, D6, E6, F6, G6, A6, B-flat6, C7, D7.

90

Bass  Musical staff for measure 90, bass clef, key signature of two flats. The staff contains a sequence of 12 eighth notes: E6, F6, G6, A6, B-flat6, C7, D7, E7, F7, G7, A7, B-flat7.

95

Bass  Musical staff for measure 95, bass clef, key signature of two flats. The staff contains a sequence of 12 eighth notes: G6, A6, B-flat6, C7, D7, E7, F7, G7, A7, B-flat7, C8, D8.

100

Bass  Musical staff for measure 100, bass clef, key signature of two flats. The staff contains a sequence of 12 eighth notes: E7, F7, G7, A7, B-flat7, C8, D8, E8, F8, G8, A8, B-flat8.

105

Bass  Musical staff for measure 105, bass clef, key signature of two flats. The staff contains a sequence of 12 eighth notes: G7, A7, B-flat7, C8, D8, E8, F8, G8, A8, B-flat8, C9, D9.

110



115



120



125



130



135



140



145



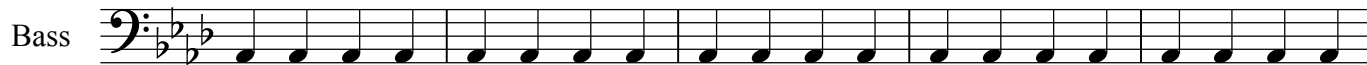
150



155



160



165

Bass



A musical staff in bass clef with a key signature of three flats (B-flat, E-flat, A-flat). It contains five measures of music, each consisting of a single eighth note followed by a dotted quarter note, with the notes moving in a stepwise fashion across the staff.

170

Bass



A musical staff in bass clef with a key signature of three flats. It contains five measures of music, each consisting of a single eighth note followed by a dotted quarter note, with the notes moving in a stepwise fashion across the staff.

175

Bass



A musical staff in bass clef with a key signature of three flats. It contains five measures of music, each consisting of a single eighth note followed by a dotted quarter note, with the notes moving in a stepwise fashion across the staff.

180

Bass



A musical staff in bass clef with a key signature of three flats. It contains five measures of music, each consisting of a single eighth note followed by a dotted quarter note, with the notes moving in a stepwise fashion across the staff.

185

Bass



A musical staff in bass clef with a key signature of three flats. It contains five measures of music, each consisting of a single eighth note followed by a dotted quarter note, with the notes moving in a stepwise fashion across the staff.

190

Bass



A musical staff in bass clef with a key signature of three flats. It contains five measures of music. The first four measures are eighth notes followed by dotted quarter notes. The fifth measure is a whole rest, with the number '28' written above it. A double bar line is present at the end of the staff.

195

Bass



A musical staff in bass clef with a key signature of three flats. It contains five measures of music. The first four measures are eighth notes followed by dotted quarter notes. The fifth measure is a whole rest, with a double bar line at the end of the staff.

200

Bass



A musical staff in bass clef with a key signature of three flats. It contains five measures of music, each consisting of a single eighth note followed by a dotted quarter note, with the notes moving in a stepwise fashion across the staff.

205

Bass



A musical staff in bass clef with a key signature of three flats. It contains five measures of music. The first four measures are eighth notes followed by dotted quarter notes. The fifth measure is a whole rest, with a double bar line at the end of the staff.

210

Bass



A musical staff in bass clef with a key signature of three flats. It contains five measures of music, each consisting of a single eighth note followed by a dotted quarter note, with the notes moving in a stepwise fashion across the staff.

215

Bass



A musical staff in bass clef with a key signature of three flats. It contains five measures of music, each consisting of a single eighth note followed by a dotted quarter note, with the notes moving in a stepwise fashion across the staff.

220



225



230



235



240



245



250



255



260



265



270



275

Bass  Musical staff for measure 275, bass clef, key signature of two flats (B-flat and E-flat). The staff contains a sequence of 12 quarter notes, all on the same pitch (G2).

280

Bass  Musical staff for measure 280, bass clef, key signature of two flats. The staff contains a sequence of 12 quarter notes, all on the same pitch (G2).

285

Bass  Musical staff for measure 285, bass clef, key signature of two flats. The staff contains a sequence of 12 quarter notes, all on the same pitch (G2).

290

Bass  Musical staff for measure 290, bass clef, key signature of two flats. The staff contains a sequence of 12 quarter notes, all on the same pitch (G2).

295

Bass  Musical staff for measure 295, bass clef, key signature of two flats. The staff contains a sequence of 12 quarter notes, all on the same pitch (G2).

300

Bass  Musical staff for measure 300, bass clef, key signature of two flats. The staff contains a sequence of 12 quarter notes, all on the same pitch (G2).

305

Bass  Musical staff for measure 305, bass clef, key signature of two flats. The staff contains a sequence of 12 quarter notes, all on the same pitch (G2).

310

Bass  Musical staff for measure 310, bass clef, key signature of two flats. The staff contains a sequence of 12 quarter notes: the first 9 notes are on G2, and the last 3 notes are on F2.

315

Bass  Musical staff for measure 315, bass clef, key signature of two flats. The staff contains a sequence of 12 quarter notes: the first 9 notes are on G2, and the last 3 notes are on F2.

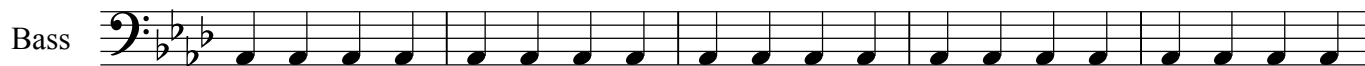
320

Bass  Musical staff for measure 320, bass clef, key signature of two flats. The staff contains a sequence of 12 quarter notes: the first 9 notes are on G2, and the last 3 notes are on F2.

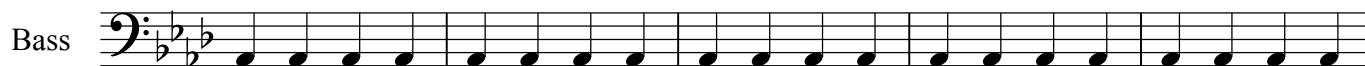
325

Bass  Musical staff for measure 325, bass clef, key signature of two flats. The staff contains a sequence of 12 quarter notes: the first 9 notes are on G2, and the last 3 notes are on F2.

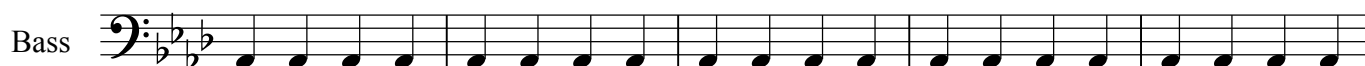
330



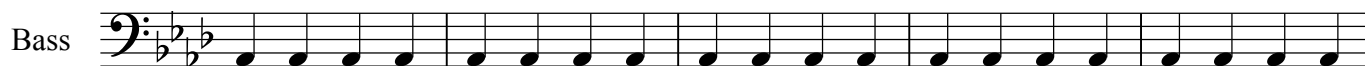
335



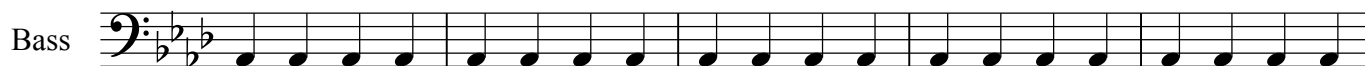
340



345



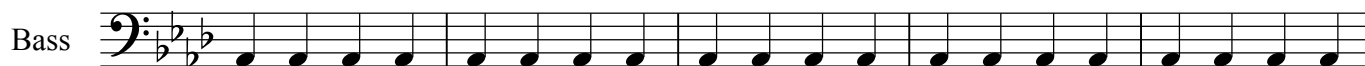
350



355



360



365



370



375



379

