



48

Bass

Measures 48-50: Bass line with eighth notes and slurs. Measure 48 starts with a bass clef and a key signature of one sharp (F#). The rhythm is consistent across the three measures.

51

Bass

Measures 51-53: Bass line with eighth notes and slurs, continuing the pattern from the previous system.

54

Bass

Measures 54-55: Bass line with eighth notes and slurs. Measure 54 ends with a 4/4 time signature change, and measure 55 ends with a 3/8 time signature change.

56

Bass

Measures 56-57: Bass line with eighth notes and slurs. Measure 56 starts with a 3/8 time signature, and measure 57 ends with a 3/8 time signature.

58

Bass

Measures 58-59: Bass line with eighth notes and slurs. Measure 58 starts with a 3/8 time signature, and measure 59 ends with a 3/8 time signature.

60

Bass

Measures 60-61: Bass line with eighth notes and slurs. Measure 60 starts with a 3/8 time signature, and measure 61 ends with a 3/8 time signature.

62

Bass

Measures 62-66: Bass line with eighth notes and slurs. Measure 62 starts with a 3/8 time signature. Measures 63-66 show a sequence of time signature changes: 5/8, 4/8, 5/8, 4/8, 5/8.

67

Bass

Measures 67-73: Bass line with eighth notes and slurs. Measure 67 starts with a 5/8 time signature. Measures 68-73 show a sequence of time signature changes: 4/8, 5/8, 4/8, 5/8, 4/8, 5/8.

74

Bass

Measures 74-79: Bass line with eighth notes and slurs. Measure 74 starts with a 5/8 time signature. Measures 75-79 show a sequence of time signature changes: 4/8, 5/8, 4/8, 5/8, 4/8.

80

Bass

Measures 80-84: Bass line with eighth notes and slurs. Measure 80 starts with a 4/8 time signature. Measures 81-84 show a sequence of time signature changes: 5/8, 4/8, 5/8, 4/8.

85

Bass

Measures 85-89: Bass line with eighth notes and slurs. Measure 85 starts with a 5/8 time signature. Measures 86-89 show a sequence of time signature changes: 4/8, 5/8, 4/8, 5/8.

90



96



101



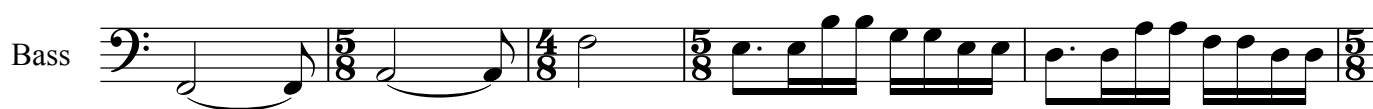
105



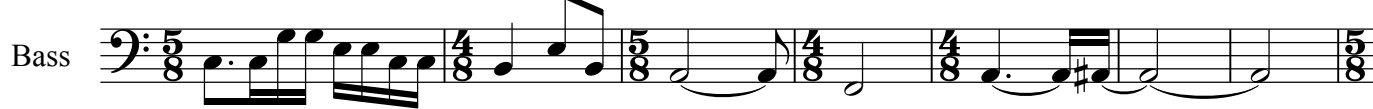
110



117



122



129



135



138



141

Bass



143

Bass

