

A Love Supreme

Pursuance (pt.3)

John Coltrane

Double Bass

6 $B^b m$

Db. $E^b m$ $B^b m$

11 Cm^{7b5} F^7 $B^b m$ Cm^{7b5} F^7

15 $B^b m$ $E^b m$

20 $B^b m$ Cm^{7b5}

24 F^7 $B^b m$ Cm^{7b5} F^7

28 163 bars (piano solo)

33

37

41

45

Db.

49

Db.

53

Db.

57

Db.

61

Db.

65

Db.

8va-----

70

Db.

74

Db.

78

Db.

82

Db.

86

Db.

90

Db. Musical staff for measure 90, bass clef, key signature of two flats. The staff contains a sequence of eighth and quarter notes, ending with a quarter rest.

94

Db. Musical staff for measure 94, bass clef, key signature of two flats. The staff contains a sequence of eighth notes, a triplet of eighth notes, and a quarter note.

98

Db. Musical staff for measure 98, bass clef, key signature of two flats. The staff contains a sequence of eighth notes, quarter notes, and a quarter rest.

102

Db. Musical staff for measure 102, bass clef, key signature of two flats. The staff contains a sequence of eighth notes, quarter notes, and a quarter rest.

106

Db. Musical staff for measure 106, bass clef, key signature of two flats. The staff contains a sequence of eighth notes, quarter notes, and a triplet of eighth notes.

110

Db. Musical staff for measure 110, bass clef, key signature of two flats. The staff contains a sequence of eighth notes, quarter notes, and a quarter rest.

113

Db. Musical staff for measure 113, bass clef, key signature of two flats. The staff contains a sequence of eighth notes, quarter notes, and a quarter rest.

116

Db. Musical staff for measure 116, bass clef, key signature of two flats. The staff contains a sequence of eighth notes, quarter notes, and a quarter rest.

120

Db. Musical staff for measure 120, bass clef, key signature of two flats. The staff contains a sequence of eighth notes, quarter notes, and a quarter rest.
8va - | *8va* - - - - - |

125

Db. Musical staff for measure 125, bass clef, key signature of two flats. The staff contains a sequence of eighth notes, quarter notes, and a quarter rest.
8va - - - - - |

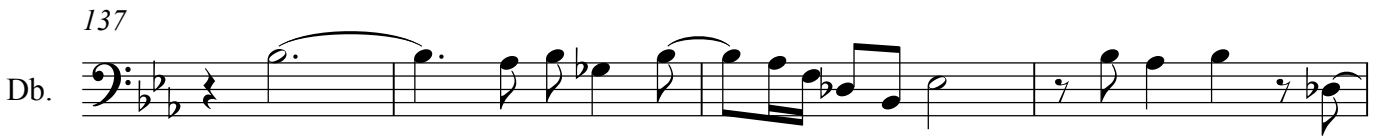
129

Db. Musical staff for measure 129, bass clef, key signature of two flats. The staff contains a sequence of eighth notes, quarter notes, and a triplet of eighth notes.

133



137



141



145



149



153



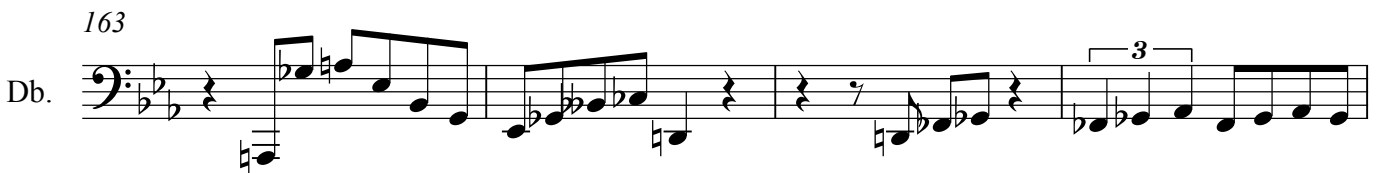
156



159



163



167



170



174



178



182



186



190



194



198



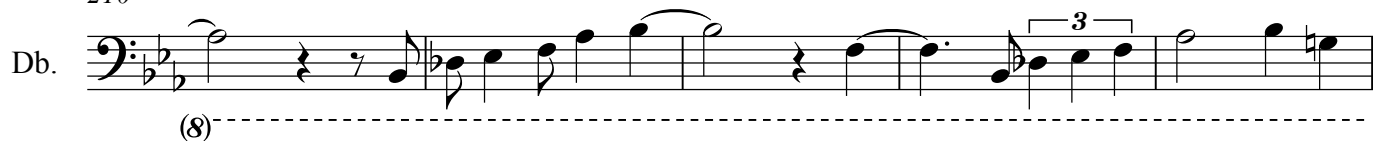
202



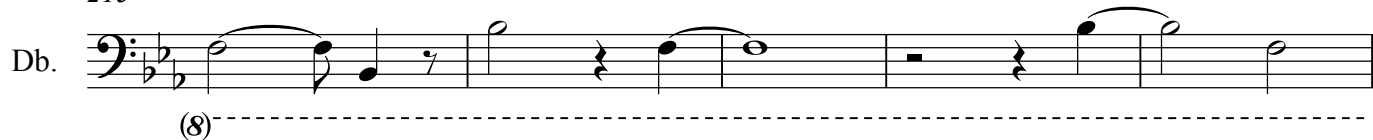
206



210



215



220

Db.

(8)

Measure 220: Bass clef, key signature of two flats (Bb, Eb), 7/8 time signature. The melody consists of eighth and quarter notes. A dashed line with the number (8) indicates an eighth rest at the beginning of the measure.

224

Db.

Measure 224: Bass clef, key signature of two flats (Bb, Eb). The melody features quarter and eighth notes with some rests.

229

Db.

Measure 229: Bass clef, key signature of two flats (Bb, Eb). The melody consists of quarter and eighth notes with rests.

233

Db.

Measure 233: Bass clef, key signature of two flats (Bb, Eb). The melody consists of quarter and eighth notes with rests.

237

Db.

Measure 237: Bass clef, key signature of two flats (Bb, Eb). The melody consists of quarter and eighth notes with rests.

241

Db.

Measure 241: Bass clef, key signature of two flats (Bb, Eb). The melody consists of quarter and eighth notes with rests.

245

Db.

Measure 245: Bass clef, key signature of two flats (Bb, Eb). The melody consists of quarter and eighth notes with rests.

249

Db.

Measure 249: Bass clef, key signature of two flats (Bb, Eb). The melody consists of quarter and eighth notes, including a triplet of eighth notes. The measure ends with a double bar line.